

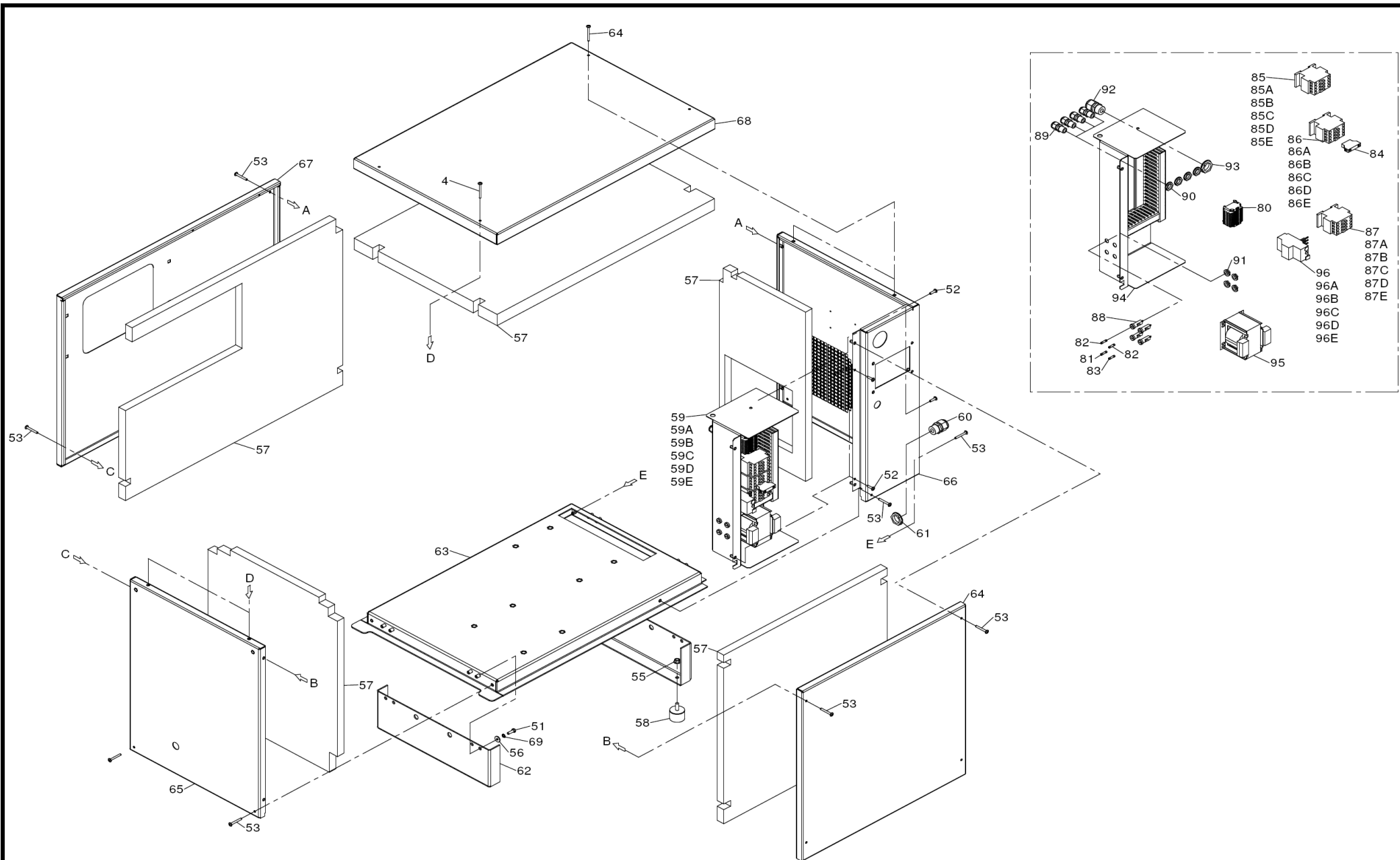


NEW SILVER 5,5-7,5-10	8 BAR	1/3
NEW SILVER 5,5-7,5-10	10 BAR	1/3
NEW SILVER 5,5-7,5-10	13 BAR	1/3

REF. RIF.	CODE CODICE	QT	DESCRIPTION DESCRIZIONE
1	4094910000	1	Panel kit <i>Kit pannelli</i>
2	7011160000	8	Screw <i>Vite TE M10x30</i>
3	7011410000	4	Screw <i>Vite TE M10x20 c/flangia</i>
4	7012610000	4	Screw <i>Vite T/Bomb. M8x30</i>
5	7014420000	4	Screw <i>Vite TBL M5x20</i>
6	7020080000	4	Nut <i>Dado M10</i>
7	7020240000	4	Nut <i>Dado M8 C/flangia</i>
8	7030040000	4	Washer <i>Rondella Ø10</i>
9	7030060000	8	Washer <i>Rondella Ø10x30</i>
10	7030670000	1	Washer <i>Rondella 1/4 alluminio</i>
11	7030680000	3	Washer <i>Rondella all. Ø3/8"</i>
12	7043140000	1	Clamp <i>Fascetta metallica</i>
13	7080160000	1	Joint <i>Raccordo a L 1/2"</i>
14	7080560000	1	Joint <i>Raccordo a L M1/8" tubo 6</i>
15	7081100000	4	Joint <i>Nipplo 3/8</i>
16	7085020000	2	Joint <i>Riduzione 1/2x3/8</i>
17	7081311150	1	Joint <i>Nipplo 1/2</i>
18	7082700000	1	Joint <i>Raccordo a T 3/8Fx1/2SVMx1/2M</i>
19	7083280000	1	Joint <i>Raccordo a L F1/4" tubo 6</i>
20	7083290000	1	Joint <i>Portagomma M3/8 tubo 12</i>
21	7083940000	1	Joint <i>Raccordo a L F1/8" tubo 6</i>
22	7085190000	1	Joint <i>Riduzione MF 3/8x1/4</i>
23	7085230000	1	Joint <i>Riduzione MM 1/4x1/4</i>
24	7085700000	1	Joint <i>Manicotto 1/2</i>
25	7086720000	2	Joint <i>Raccordo dritto M1/4 tubo Ø6</i>
26	7110400000	1	Pressure gauge <i>Manometro</i>
27	7211141150	1	Oil filter <i>Filtro olio</i>
28	7211960000	1	Air-oil Filter <i>Filtro disoleatore</i>
29	7216050000	1	Air Filter <i>Filtro Aria</i>
30	7233610000	1	Rilsan kit Hose <i>Kit tubo rilsan</i>
31	7234960000	1	Infeed Hose <i>Tubo alimentazione</i>
32	7235040000	1	Outlet oil Hose <i>Tubo mandata olio</i>
33	7235060000	1	Return oil Hose <i>Tubo ritorno olio</i>
34	7250690000	1	Pressure switch <i>Pressostato</i>
35	4091080000	1	Emergency Push Botton <i>Pulsante a fungo di menegerenza</i>
36	7370920000	2	Belt <i>Cinghia trap. (5,5HP / 8bar)</i>
36A	7370690000	2	Belt <i>Cinghia trap. (7,5HP / 8bar)</i>
36B	7370950000	2	Belt <i>Cinghia trap. (10HP / 8bar)</i>
36C	7371580000	2	Belt <i>Cinghia trap. (5,5HP / 10bar)</i>
36D	7371210000	2	Belt <i>Cinghia trap. (7,5-10HP / 10bar - 10HP / 13bar)</i>
36E	7370640000	2	Belt <i>Cinghia trap. (5,5HP / 13bar)</i>
36F	7371530000	2	Belt <i>Cinghia trap. (7,5HP / 13bar)</i>
37	7385370000	1	Motor <i>Motore 5,5 HP</i>
37A	7385380000	1	Motor <i>Motore 7,5 HP</i>
37B	7385180000	1	Motor <i>Motore 10 HP</i>
38	7407520000	1	Pulley <i>Puleggia Øp100</i>
39	7406950000	1	Pulley <i>Puleggia Øp160 (5,5HP - 8bar)</i>
39A	7406620000	1	Pulley <i>Puleggia Øp224 (7,5HP - 8bar)</i>
39B	7406630000	1	Pulley <i>Puleggia Øp250 (10HP - 8bar)</i>
39C	7406600000	1	Pulley <i>Puleggia Øp140 (5,5HP - 10bar)</i>
39D	7406610000	1	Pulley <i>Puleggia Øp200 (7,5HP / 10bar)</i>
39E	7409960000	1	Pulley <i>Puleggia Øp200 (10HP / 10-13bar)</i>
39F	7407790000	1	Pulley <i>Puleggia Øp125 (5,5HP - 13bar)</i>
39G	7408570000	1	Pulley <i>Puleggia Øp180 (7,5HP - 13bar)</i>

VALID FROM 24/10/2008 - VALIDO DAL 24/10/2008 (REV-01)

[illegible]

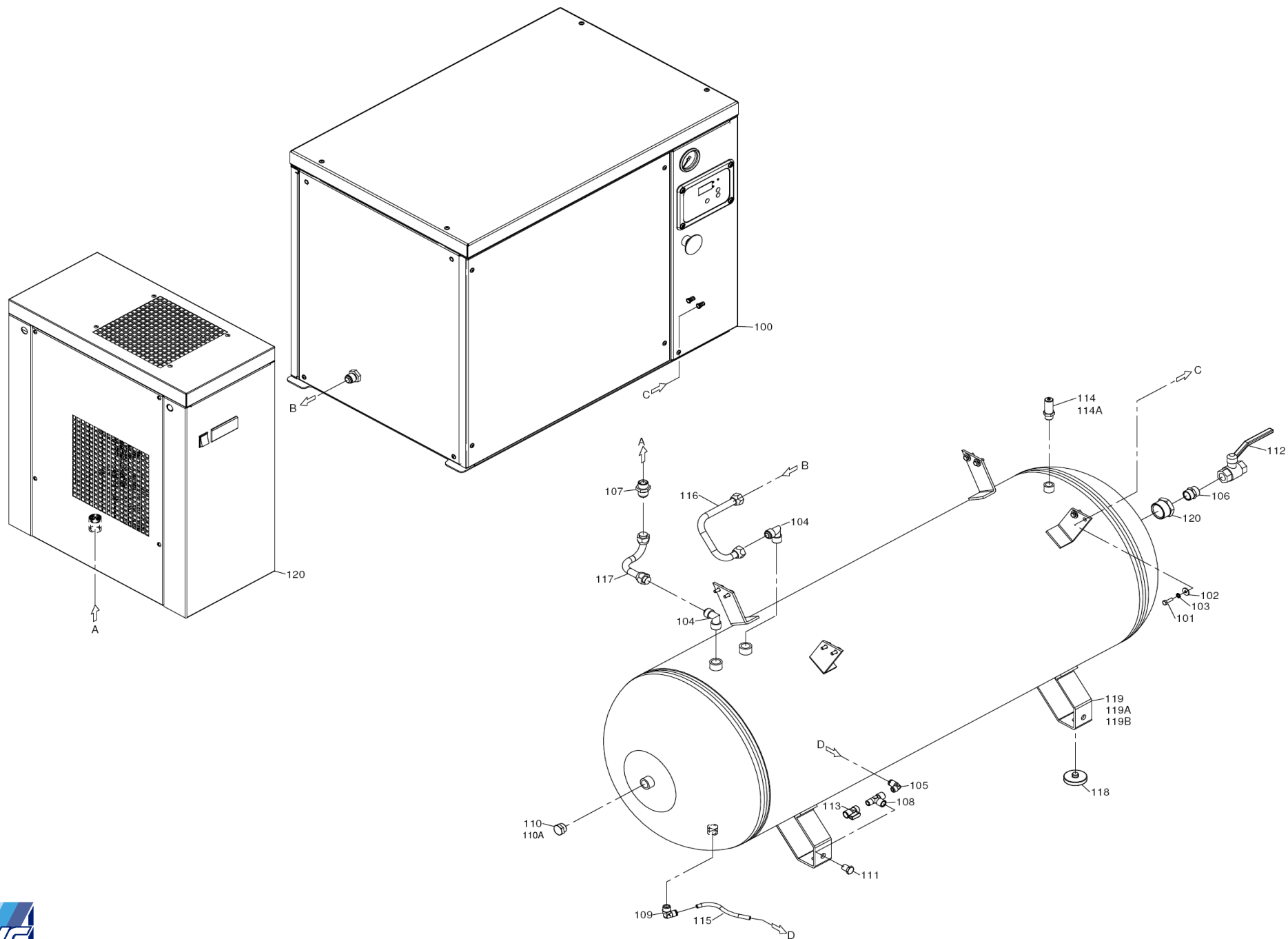


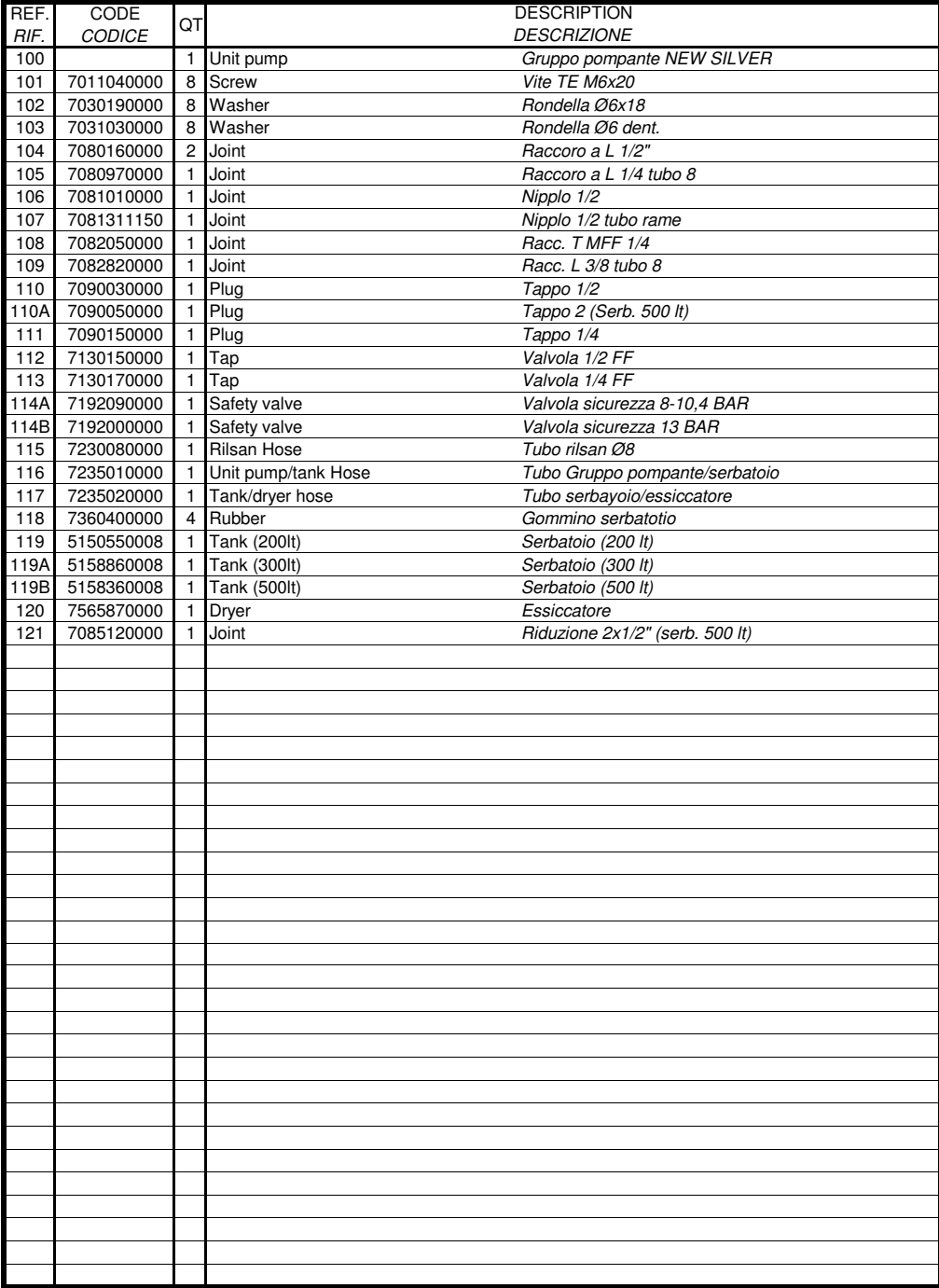


NEW SILVER 5,5-7,5-10	8 BAR	2/3
NEW SILVER 5,5-7,5-10	10 BAR	2/3
NEW SILVER 5,5-7,5-10	13 BAR	2/3

REF. RIF.	CODE CODICE	QT	DESCRIPTION DESCRIZIONE	REF. RIF.	CODE CODICE	QT	DESCRIPTION DESCRIZIONE
51	7011040000	8	Screw <i>Vite M6x20</i>	94	7514180000	1	Electric box <i>Cassetta elettrica</i>
52	7014420000	4	Screw <i>Vite TBL M5x20</i>	95	7564230000	1	Transformer <i>Trasformatore 200 VA</i>
53	7014440000	13	Screw <i>Vite TBL M5x40</i>	96	7432420000	1	Thermal relay <i>Relé termico (380-415 V - 50/60Hz - 5,5HP)</i>
54	7014450000	4	Screw <i>Vite TBL M5x50</i>	96A	7432430000	1	Thermal relay <i>Relé termico (220-240 V - 50/60Hz - 5,5HP)</i>
55	7020240000	4	Nut <i>Dado M8 C/flangia</i>	96B	7432420000	1	Thermal relay <i>Relé termico (380-415 V - 50/60Hz - 7,5HP)</i>
56	7030190000	8	Washer <i>Rondella Ø6x18</i>	96C	7432510000	1	Thermal relay <i>Relé termico (220-240 V - 50/60Hz - 7,5HP)</i>
57	7213520000	5	<i>Kit Fonoassorbente</i>	96D	7432420000	1	Thermal relay <i>Relé termico (380-415 V - 50/60Hz - 10HP)</i>
58	7364520000	4	Rubber <i>Piede in gomma</i>	96E	7432520000	1	Thermal relay <i>Relé termico (220-240 V - 50/60Hz - 10HP)</i>
59	7414820000	1	Electric box <i>Cassetta elettrica (5,5 HP 380-415V 50/60 Hz)</i>				
59A	7414740000	1	Electric box <i>Cassetta elettrica (7,5 HP 380-415V 50/60 Hz)</i>				
59B	7414750000	1	Electric box <i>Cassetta elettrica (10 HP 380-415V 50/60 Hz)</i>				
59C	7414830000	1	Electric box <i>Cassetta elettrica (5,5 HP 220-240V 50/60 Hz)</i>				
59D	7414870000	1	Electric box <i>Cassetta elettrica (7,5 HP 220-240V 50/60 Hz)</i>				
59E	7414860000	1	Electric box <i>Cassetta elettrica (10 HP 220-240V 50/60 Hz)</i>				
60	7500650000	1	<i>Pressacavo M25x1,5</i>				
61	7500650010	1	Blocker Nut <i>Controdado M25x1,5</i>				
62	5167430008	2	Foot <i>Piede SSA/Silver</i>				
63	7514120000	1	Base <i>Basamento</i>				
64	7514130000	1	Front panel <i>Pannello frontale</i>				
65	7514140000	1	Dx panel <i>Pannello laterale DX</i>				
66	7514150000	1	Sx panel <i>Pannello laterale SX</i>				
67	7514160000	1	Rear panel <i>Pannello posteriore</i>				
68	7514170000	1	Superior panel <i>Pannello superiore</i>				
69	7031030000	8	Washer <i>Rondella UNI 3707 Ø6</i>				
80		1	Connector <i>Morsettiera</i>				
81	7431640000	1	Fuse <i>Fusibile F4</i>				
82	7432720000	2	Fuse <i>Fusibile F3-F2</i>				
83	7432730000	1	Fuse <i>Fusibile F5</i>				
84	7432780000	1	Normally Closed contact <i>Contatto NC</i>				
85	7433510000	1	Contacto K1 <i>Contattore K1 (380/415V - 50/60Hz - 5,5HP)</i>				
85A	7432270000	1	Contacto K1 <i>Contattore K1 (220/240V - 50/60Hz - 5,5HP)</i>				
85B	7432260000	1	Contacto K1 <i>Contattore K1 (380/415V - 50/60Hz - 7,5HP)</i>				
85C	7432270000	1	Contacto K1 <i>Contattore K1 (220/240V - 50/60Hz - 7,5HP)</i>				
85D	7432260000	1	Contacto K1 <i>Contattore K1 (380/415V - 50/60Hz - 10HP)</i>				
85E	7432250000	1	Contacto K1 <i>Contattore K1 (220/240V - 50/60Hz - 10HP)</i>				
86	7433510000	1	Contacto K2 <i>Contattore K2 (380/415V - 50/60Hz - 5,5HP)</i>				
86A	7432270000	1	Contacto K2 <i>Contattore K2 (220/240V - 50/60Hz - 5,5HP)</i>				
86B	7432260000	1	Contacto K2 <i>Contattore K2 (380/415V - 50/60Hz - 7,5HP)</i>				
86C	7432270000	1	Contacto K2 <i>Contattore K2 (220/240V - 50/60Hz - 7,5HP)</i>				
86D	7432260000	1	Contacto K2 <i>Contattore K2 (380/415V - 50/60Hz - 10HP)</i>				
86E	7432250000	1	Contacto K2 <i>Contattore K2 (220/240V - 50/60Hz - 10HP)</i>				
87	7433510000	1	Contacto K3 <i>Contattore K3 (380/415V - 50/60Hz - 5,5HP)</i>				
87A	7433510000	1	Contacto K3 <i>Contattore K3 (220/240V - 50/60Hz - 5,5HP)</i>				
87B	7433510000	1	Contacto K3 <i>Contattore K3 (380/415V - 50/60Hz - 7,5HP)</i>				
87C	7433510000	1	Contacto K3 <i>Contattore K3 (220/240V - 50/60Hz - 7,5HP)</i>				
87D	7433510000	1	Contacto K3 <i>Contattore K3 (380/415V - 50/60Hz - 10HP)</i>				
87E	7432270000	1	Contacto K3 <i>Contattore K3 (220/240V - 50/60Hz - 10HP)</i>				
88	7435000000	4	Fuse carrier <i>Portafusibili</i>				
89	7500430000	4	Stretch eliminator <i>Pressacavo M16x1,5</i>				
90	7500430010	4	Blocker Nut <i>Controdado M16x1,5</i>				
91	7500560010	4	Blocker Nut <i>Controdado M12x1,5</i>				
92	7500650000	1	Stretch eliminator <i>Pressacavo M25x1,5</i>				
93	7500650010	1	Blocker Nut <i>Controdado M25x1,5</i>				

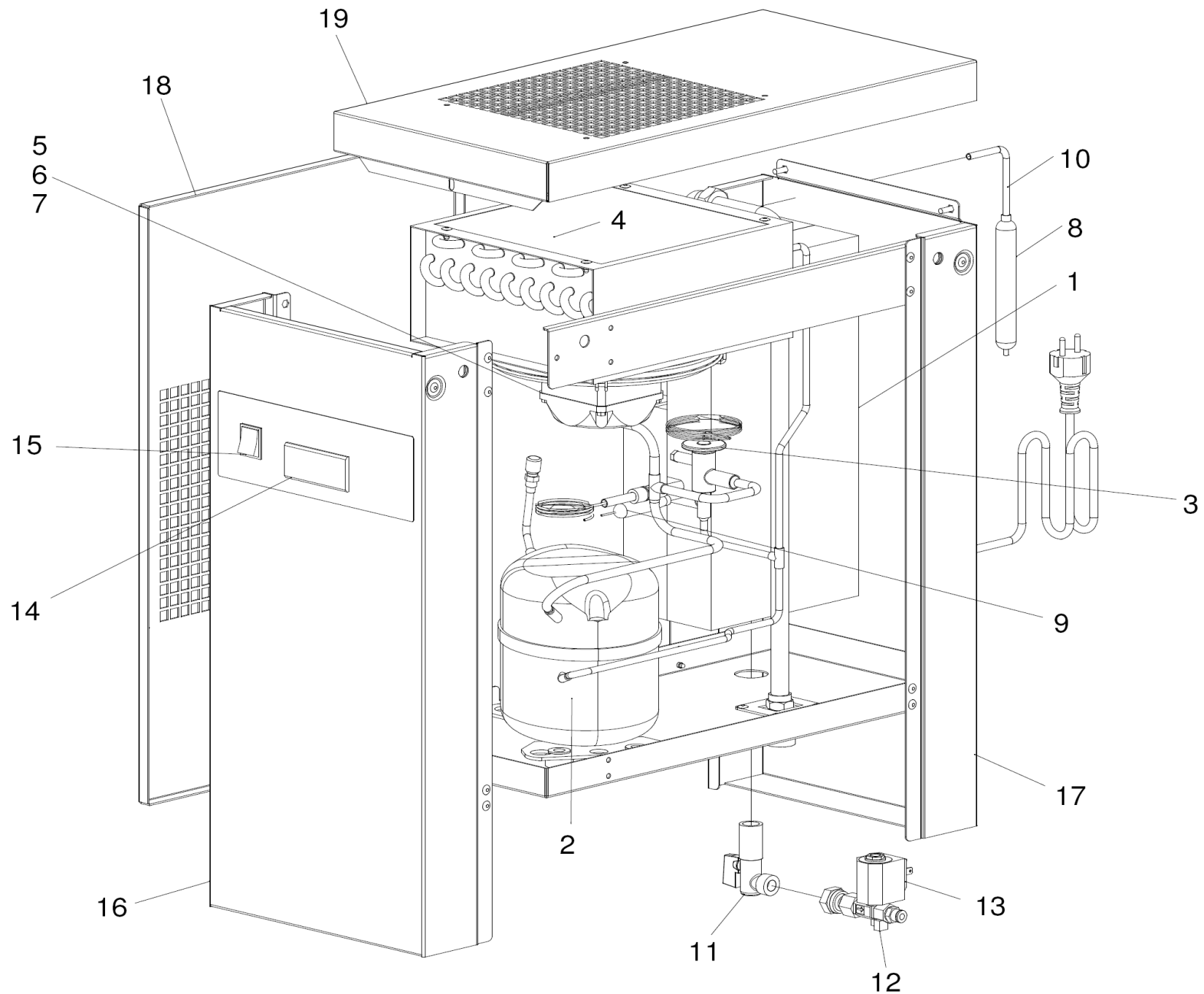
VALID FROM 24/10/2008 - VALIDO DAL 24/10/2008 (REV-01)





VALID FROM 24/10/2008 - VALIDO DAL 24/10/2008 (REV-01)

[illegible]



DRY 8 SILVER	FREON R134A	1/1

[illegible]

VALID FROM 27/02/2008 - VALIDO DAL 27/02/2008 (REV-00)

[illegible]

REF. RIF.	CODE CODICE	DESCRIPTION DESCRIZIONE
1	4095220000	Gaskets kit <i>Kit guarnizioni</i>
2	4092010000	Bearing Kit <i>Kit Cuscinetti</i>
3	4095240000	Minimun valve kit <i>Kita valvola di minima</i>
4	4092030000	Oil seal kit <i>Kit paraolio</i>
5	4092050000	Suction valve kit <i>Kit valvola aspirazione</i>
6	4095270000	Recovery oil hose kit <i>Kit recupero tubo olio</i>
7	4095280000	Flange kit <i>Kit flangia</i>

