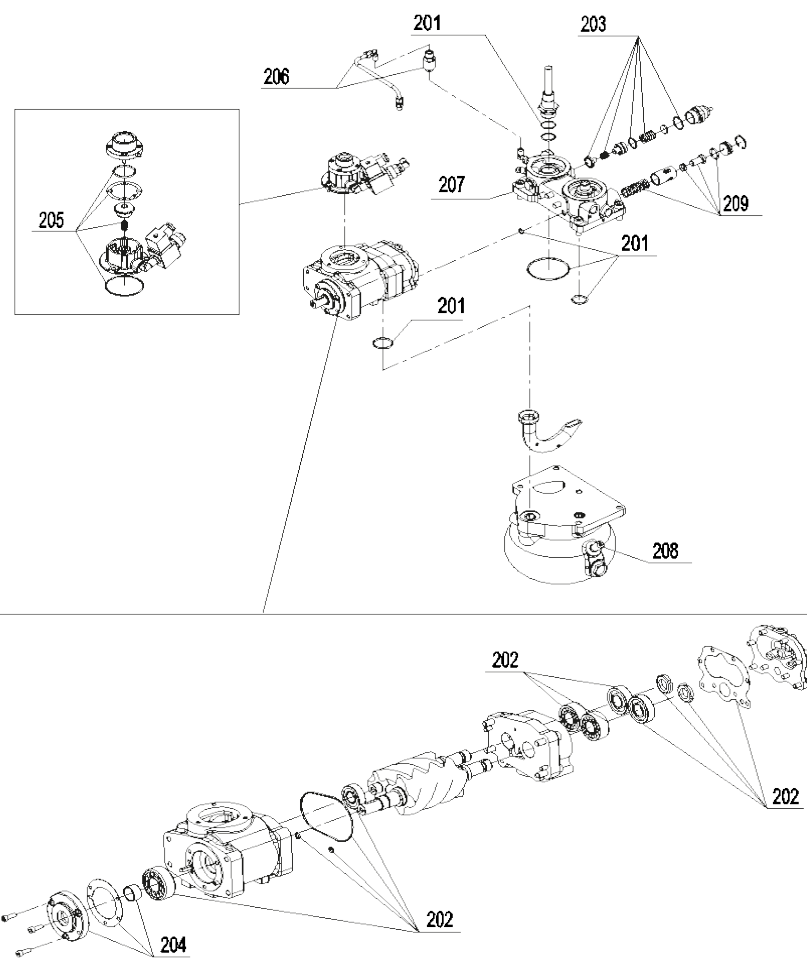
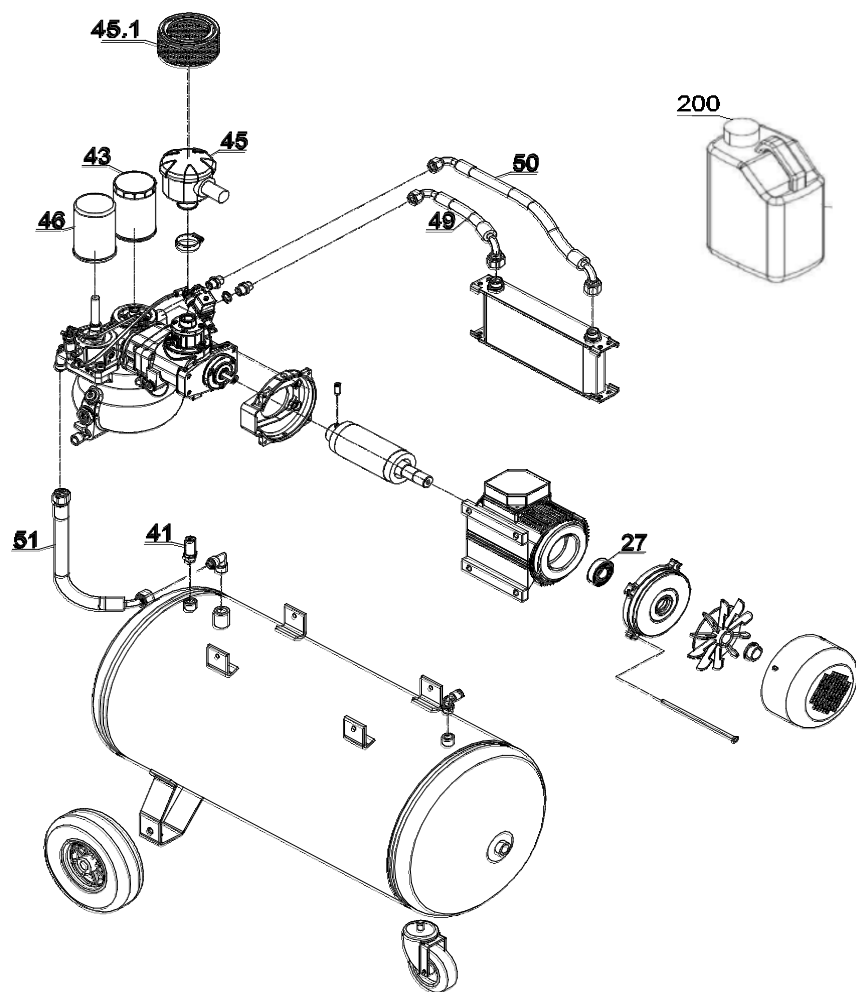


New Silver 3/300	9-bar	V230-50 Hz	1/1

REF. RIF.	CODE CODICE	QT	DESCRIPTION DESCRIZIONE	REF. RIF.	CODE CODICE	QT	DESCRIPTION DESCRIZIONE
1	1124010139	1	Stator	42	1127200157	1	Fan
2	1124280094	1	Rotor kit	43	1127210007	1	Oil filter
3	1125140027	1	Handle	44	1127210451	1	Soundproof Kit
4	1125150568	1	Tank	45	1127210292	1	Intake filter kit
5	X	4	Screw	45,1	1127210607	1	Intake filter
6	X	1	Screw	46	1127210608	1	Oil separator filter
7	X	8	Screw	47	1127230001	1	Rilsan hose
8	X	2	Screw	48	1127230003	1	Rilsan hose
9	X	2	Screw	49	1127230882	1	Rubber hose
10	X	6	Screw	50	1127230883	1	Rubber hose
11	X	7	Screw	51	1127230100	1	Rubber hose
12	X	17	Screw	52	1127250002	1	Pressure switch
13	X	3	Screw	53	X	1	Pivot
14	X	4	Tension rod	54	X	2	Wheel
15	X	4	Nut	55	1127300046	1	Main switch
16	X	4	Nut	56	1127310053	1	Capacitor
17	X	3	Nut	57	1127320626	1	Cable
18	X	11	Nut	58	X	2	Wheel pin
19	X	2	Nut	59	1127380234	1	Terminal cover
20	X	10	Washer	60	1127380670	1	Fun Cover
21	X	3	Washer	61	1127410566	1	Elettric board
22	1127200106	1	Fan	61,1	1120004647	1	Electric box
23	X	2	Washer	62	1127420343	1	Screw pump unit
24	X	2	Washer	63	1125160081	1	Motor Flange
25	1127040327	1	Clamp	64	1127480850	1	Thermostat Capsule
26	1127040334	1	Clamp	65	1127500105	1	Cable clamp
27	1127060065	1	Bearing	66	1127500106	1	Cable clamp
28	1127080016	1	Joint	67	1127510674	1	Radiator
29	1127080081	2	Joint	68	1127560002	1	Hour meter
30	1127080100	1	Joint	69	1127560446	1	Oil Thermostat
31	1127080134	2	Joint	70	1127640016	1	Covering
32	1127080219	1	Joint	71	1129701523	1	Distributor
33	1127080425	1	Joint	72	1127560103	1	Heather
34	1127090003	2	Plug				
35	1127090007	4	Plug				
36	1127110018	2	Pressure gauge	101	1124080315	1	Wheel kit
37	1127130016	1	Discharge tap	102	1124080306	1	Pivot wheel kit
38	1127130057	1	Universal Tap				
39	1120011397	1	Plastic schroud kit				
39,1	1127150598	1	Upper cover				
39,2	1127150030	1	Side plastic schroud				
39,3	1127150031	1	Side plastic schroud				
39,4	1127150595	1	Instruments support				
40	1127150596	1	Sheet metal Kit				
40,1	1125160082	1	Base				
40,2	1120004645	1	Press. reducer sup.				
40,3	1125160024	1	Instruments support				
40,4	1125160085	1	Front cover				
40,5	1125160104	1	Conveyor				
40,6	1125160139	1	Pressure switch Support				
40,7	1125160143	1	Support				
40,8	1125160145	1	Rear cover				
40,9	1125160190	1	Support				
41	1127190209	1	Safety valve				

VALID FROM 01/12/2017 - VALIDO DAL 01/12/2017 (REV-01)





Progr.Man. NewSil. 3/300	9-bar	V230-50Hz	1/1

REF. RIF.	CODE CODICE	QT	DESCRIPTION DESCRIZIONE
A	.	1	Maintenance program <i>Progr. manutenzione 500 Ore (3 mesi - 3 months)</i>
43	7211141150	1	Oil filter <i>Filtro olio</i>
200	7120340000	1	Maintenance oil <i>Olio per manutenzione</i>
B	.	1	Maintenance program <i>Progr. manutenzione 2500 Ore (1 Anno - 1 year)</i>
43	7211141150	1	Oil filter <i>Filtro olio</i>
45,1	7216070010	1	Intake filter <i>Filtro aspirazione</i>
46	7216080000	1	Oil separator filter <i>Filtro Disoleatore</i>
200	7120340000	1	Maintenance oil <i>Olio per manutenzione</i>
C	.	1	Maintenance program <i>Progr. manutenzione 5000 Ore (2 Anni - 2 years)</i>
43	7211141150	1	Oil filter <i>Filtro olio</i>
45,1	7216070010	1	Intake filter <i>Filtro aspirazione</i>
46	7216080000	1	Oil separator filter <i>Filtro Disoleatore</i>
200	7120340000	1	Maintenance oil <i>Olio per manutenzione</i>
206	4095270000	1	Oil recovery hose kit <i>Kit tubo recupero olio</i>
205	4092050000	1	Intake valve kit <i>Kit valvola di aspirazione</i>
D	.	1	Maintenance program <i>Progr. manutenzione 7500 Ore (3 Anni - 3 years)</i>
43	7211141150	1	Oil filter <i>Filtro olio</i>
45,1	7216070010	1	Intake filter <i>Filtro aspirazione</i>
46	7216080000	1	Oil separator filter <i>Filtro Disoleatore</i>
27	7060650000	1	Bearing <i>Cuscinetto 6205 2RS 25.52. 15-SKF</i>
200	7120340000	1	Maintenance oil <i>Olio per manutenzione</i>
203	4095240000	1	Minimum valve kit <i>Kit valvola di minima</i>
209	7423430010	1	Thermostatic valve kit <i>Kit valvola termostatica</i>
41	7192090000	1	Safety valve <i>Valvola di Sic. 3/8"10,4BAR</i>
208	7192920000	1	Safety valve <i>Valvola di Sic. 1/4"B7-15 BAR-VMC</i>
E	.	1	Maintenance program <i>Progr. manutenzione 10000 Ore (4 anni - 4 years)</i>
43	7211141150	1	Oil filter <i>Filtro olio</i>
45,1	7216070010	1	Intake filter <i>Filtro aspirazione</i>
46	7216080000	1	Oil separator filter <i>Filtro Disoleatore</i>
200	7120340000	1	Maintenance oil <i>Olio per manutenzione</i>
206	4095270000	1	Oil recovery hose kit <i>Kit tubo recupero olio</i>
205	4092050000	1	Intake valve kit <i>Kit valvola di aspirazione</i>
49	7238820000	1	Rubber hose <i>Tubo in gomma</i>
50	7238830000	1	Rubber hose <i>Tubo in gomma</i>
51	7238840000	1	Rubber hose <i>Tubo in gomma</i>
201	4095220000	1	Gasket kit <i>Kit guarnizioni</i>
F	.	1	Maintenance program <i>Progr. manutenzione 12500 Ore (5 anni - 5 years)</i>
43	7211141150	1	Oil filter <i>Filtro olio</i>
45,1	7216070010	1	Intake filter <i>Filtro aspirazione</i>
46	7216080000	1	Oil separator filter <i>Filtro Disoleatore</i>
200	7120340000	1	Maintenance oil <i>Olio per manutenzione</i>
G	.	1	Maintenance program <i>Progr. manutenzione 15000 Ore (6 Anni - 6 years)</i>
43	7211141150	1	Oil filter <i>Filtro olio</i>
45,1	7216070010	1	Intake filter <i>Filtro aspirazione</i>
46	7216080000	1	Oil separator filter <i>Filtro Disoleatore</i>
200	7120340000	1	Maintenance oil <i>Olio per manutenzione</i>
206	4095270000	1	Oil recovery hose kit <i>Kit tubo recupero olio</i>
205	4092050000	1	Intake valve kit <i>Kit valvola di aspirazione</i>
203	4095240000	1	Minimum valve kit <i>Kit valvola di minima</i>
209	7423430010	1	Thermostatic valve kit <i>Kit valvola termostatica</i>
27	7060650000	1	Bearing <i>Cuscinetto 6205 2RS 25.52. 15-SKF</i>
41	7192090000	1	Safety valve <i>Valvola di Sic. 3/8"10,4BAR</i>
208	7192920000	1	Safety valve <i>Valvola di Sic. 1/4"B7-15 BAR-VMC</i>

VALID FROM 01/12/2017 - VALIDO DAL 01/12/2017 (REV-01)

[illegible]