



Spareparts

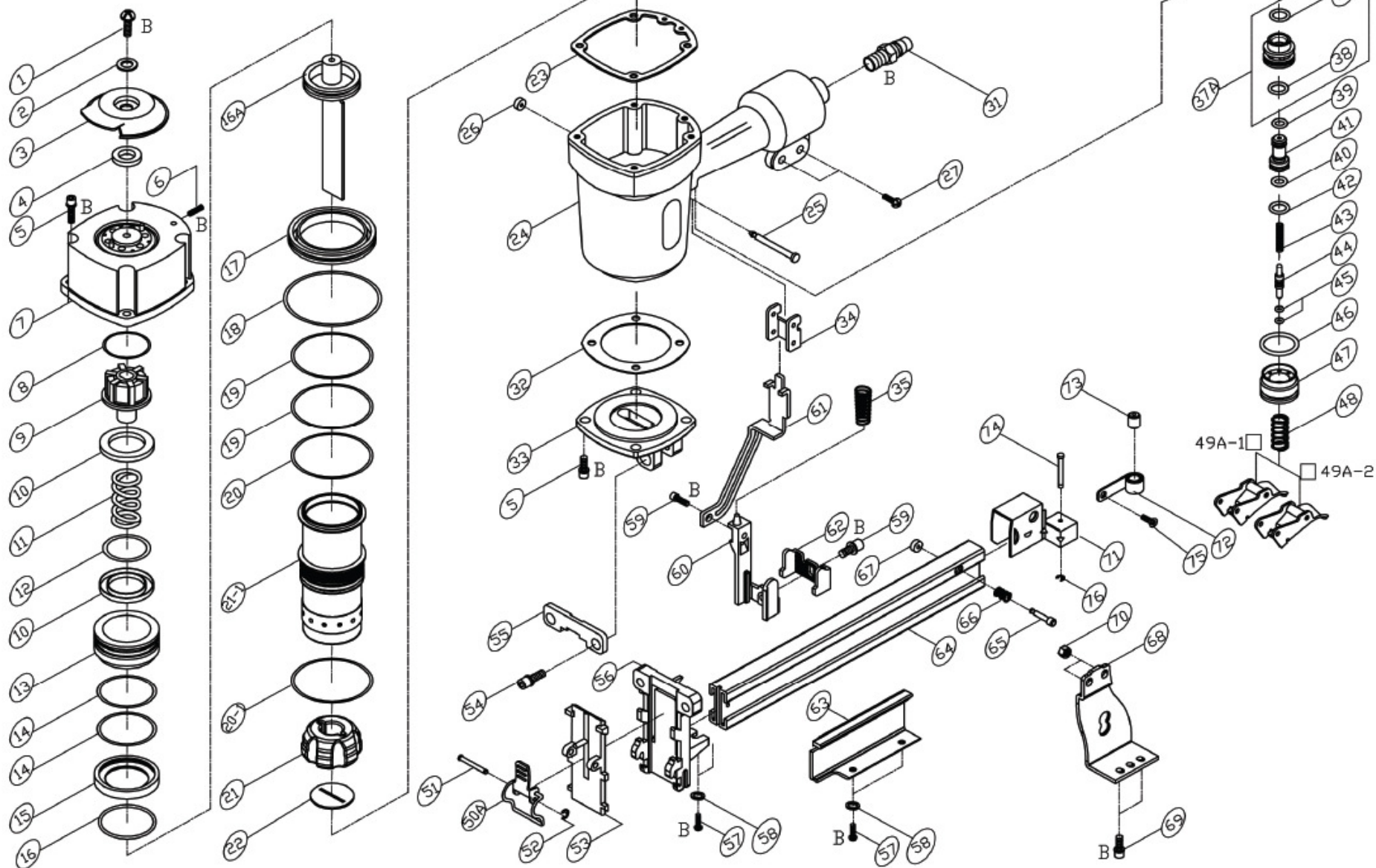


CFS-2640 HEAVY DUTY NIETPISTOOL
CFS-2640 HEAVY DUTY AGRAFEUSE

CE

Bestelnr./N° de cde. 28018

CFS-2640



*R : APPLY LOCTITE 271
 *B : APPLY LOCTITE 242

P30500 12/20/06

PARTS LIST CFS-2640

*WHEN ORDERING SPARE PARTS,PLEASE STATE ITEM No,PART NO.AND DESCRIPTION.

ITEM	PART NO	DESCRIPTION	QTY	ITEM	PART NO	DESCRIPTION	QTY	ITEM	PART NO	DESCRIPTION	QTY
01	US06100B-16	UM.HD.BOLT	1	35	30503301	SPRING	1	68	30506801	BRACKET	1
02	FW060130B-10	FLAT WASHER	1	36	OR14515N	O RING**	1	69	HS05080BW-12	HEX.SOC.HD.BOLT+SW	2
03	15100202	EXHAUST COVER	1	37A	15103701A	VALVE	1	70	LN0600NB	LOCK NUT	2
04	15300401	PU RING	1	38	OR17515N	O RING**	1	71	30506101	PUSHER	1
05	HS06100BW-20	HEX.SOC.HD.BOLT+SW	8	39	OR05819N	O RING**	1	72	15306201	SPRING**	1
06	SS06100B-06	SET SCREW	1	40	OR06020N	O RING**	1	73	15308601	ROLLER	1
07	15100601	CAP	1	41	15104101	VALVE PLUNGER	1	74	12105801	SHAFT	1
08	15100801	SPACER	1	42	OR08819N	O RING**	1	75	FW04070B-04	FLAT.HD.BOLT	1
09	15100901	PISTON STOPPER**	1	43	15108301	SPRING	1	76	ER0250R	E RING	1
10	15100401	SPACER	2	44	15104201	PLUNGER	1				
11	15101001	SPRING**	1	45	OR02515V	O RING**	2				
12	OR41630N	O RING**	1	46	OR19824N	O RING**	1				
13	15101201	PISTON HEAD VALVE	1	47	15104401	PLUNGER CAP	1				
14	OR52126N	O RING	2	48	16305401	SPRING	1				
15	15101401	SEAL	1	49A-1	25205301A	SEQUENTIAL FIRE TRIGGER	1				
16	OR44037V	O RING**	1	49A-2	25205302A	BUMP FIRE TRIGGER	1				
16A	30501601A	PISTON ASSEMBLY	1	50A	30505001A	LATCH	1				
17	15301801	CYLINDER SPACER	1	51	30504801	STEPPED PIN	1				
18	OR74431N	O RING	1	52	ER0300R	E RING	1				
19	OR53726N	O RING**	2	53	30505101	DRIVER GUIDE COVER	1				
20	OR47735N	O RING**	1	54	HS06100B-20	HEX.SOC.HD.BOLT	2				
20-1	OR49735N	O RING**	1	55	30505401	SET PLATE	1				
21	30502201	BUMPER	1	56	30505201	NOSE	1				
21-1	25202101	CYLINDER	1	57	US05080B-12	UM.HD.BOLT	4				
22	30502301	WASHER	1	58	SW0500W	SPRING WASHER	4				
23	15102401	GASKET**	1	59	HS05080BW-08	HEX.SOC.HD.BOLT+SW	2				
24	15102503	BODY	2	60	30503401	SAFETY LEVER	1				
25	16102901	STEPPED PIN	2	61	30509101	UPPER SAFETY LEVER	1				
26	16103001	PU RING	2	62	30509201	SAFETY ADJUSTING LEVER	1				
27	US06100B-20	UM.HD.BOLT	2	63	30505801	COVER	1				
31	12106401	AIR PLUG	1	64	30505501	MAGAZINE	1				
32	15108401	GASKET**	1	65	30506401	STOPPER	1				
33	25202901	BOTTOM	1	66	11002601	SPRING	1				
34	25203201	GUIDE SAFETY LEVER	1	67	23306401	RUBBER WASHER	1				