



Spareparts



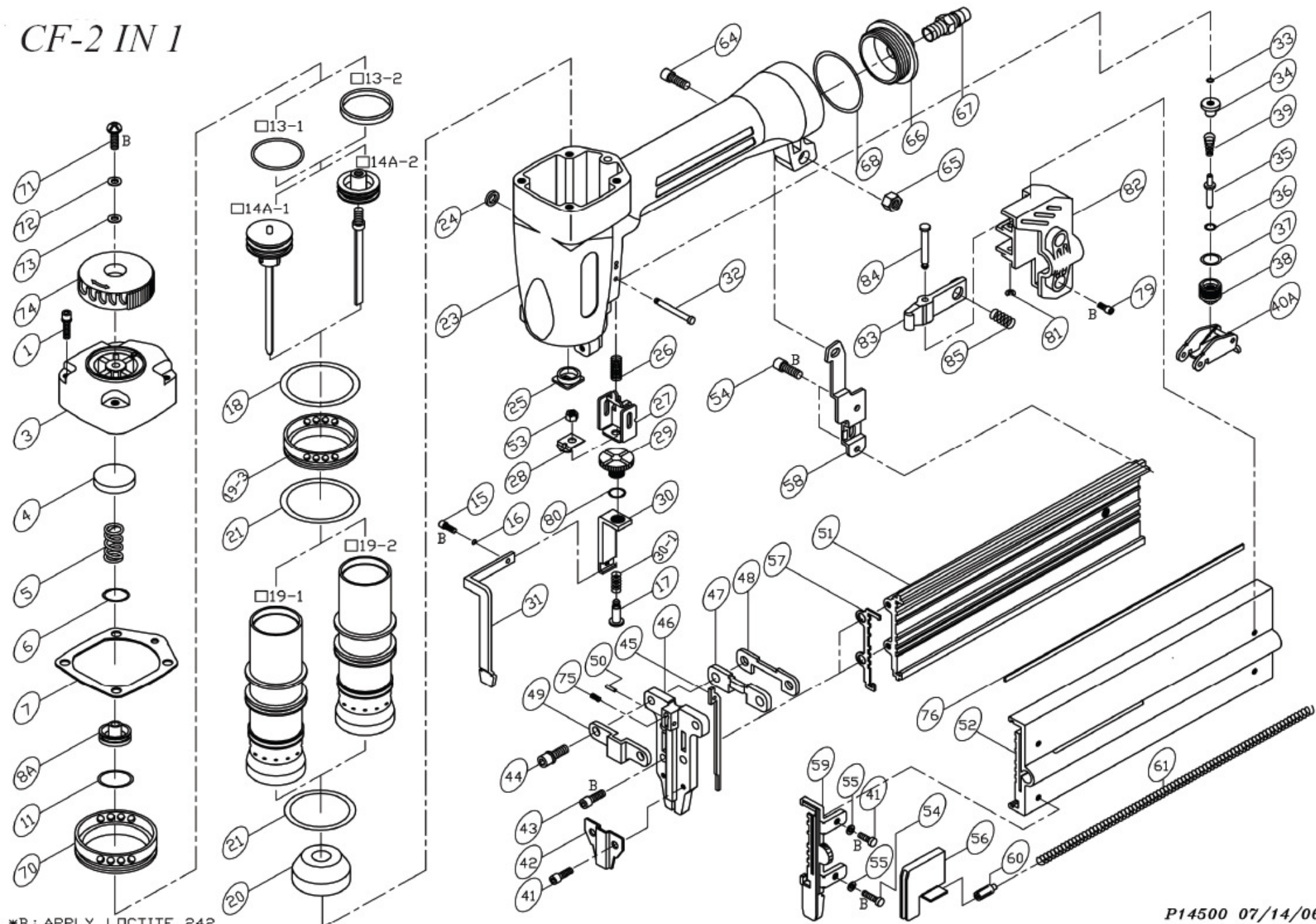
CF-2 IN 1 COMBIPISTOOL

CF-2 EN 1 PISTOLET COMBINE

CE

Bestelnr./N° de cde. 28027

CF-2 IN 1



PARTS LIST CF-2 IN 1

*WHEN ORDERING SPARE PARTS,PLEASE STATE ITEM No.,PART NO.AND DESCRIPTION.

ITEM	PART NO	DESCRIPTION	QTY	ITEM	PART NO	DESCRIPTION	QTY	ITEM	PART NO	DESCRIPTION	QTY
01	HS05080BW-35	HEX. SOC. HD. BOLT+SW	4	35	11003503	TRIGGER VALVE STEM	1	72	FW050120B-08	FLAT WASHER	1
03	13900305	CAP	1	36	OR02515V	O RING**	1	73	12103301	SEAL	1
04	12100401	SEAL**	1	37	OR10719N	O RING**	1	74	13907403	EXHAUST COVER	1
05	12100501	SPRING**	1	38	11003803	TRIGGER VALVE GUIDE	1	75	17907901	SPRING	1
06	OR13824N	O RING**	1	39	11006901	SPRING	1	76	14507401	NAIL GUIDE LINER	1
07	11100701	CAP SEAL**	1	40A	15104501A	TRIGGER ASSEMBLY	1	79	HS04070B-08	HEX. SOC. HD. BOLT	3
08A	13900801A	HEAD VALVE ASM.	1	41	HS04070B-06	HEX. SOC. HD. BOLT	2	80	OR06010N	O RING**	1
11	OR31824N	O RING**	1	42	17904201	NOSE COVER	1	81	ER0250R	E RING	1
13-1	OR23735N	O RING**	1	43	HS04070B-16	HEX. SOC. HD. BOLT	2	82	13905202	END CORE	1
13-2	13901304	PISTON RING	1	44	HS05080BW-20	HEX. SOC. HD. BOLT+SW	2	83	32906001	SPRING	1
14A-1	14501403A	DRIVER ASSEMBLY**	1	45	17904501	NAIL GUIDE PLATE	1	84	13908401	STEPPED PIN	1
14A-2	14501404A	DRIVER ASSEMBLY**	1	46	14504601	NOSE	1	85	13908102	STOPPER	1
15	HS03050B-05	HEX. SOC. HD. BOLT	1	47	12204701	SET PLATE	1				
16	SW0300W	SPRING WASHER	1	48	10904801	SET PLATE	1				
17	18104601	SET SHAFT	1	49	17908301	SET PLATE	1				
18	OR44431N	O RING**	1	50	RP2510S	ROLLED PIN	1				
19-1	13901902	CYLINDER	1	51	14505102	MAGAZINE	1				
19-2	13901902G	CYLINDER	1	52	14505401	MAGAZINE COVER	1				
19-3	13901903	COLLAR	1	53	LN0400N	LOCK NUT	1				
20	13902001	BUNPER**	1	54	HS04070B-10	HEX. SOC. HD. BOLT	2				
21	OR35020N	O RING**	2	55	SW0400W	SPRING WASHER	2				
23	13902301	BODY	1	56	14505601	PUSHER	1				
24	OR01919N	O RING**	1	57	14505701	SET PLATE	1				
25	14502501	JOINT GUIDE	1	58	14505803	BRACKET	1				
26	11002601	SPRING	1	59	14505901	TAIL COVER	1				
27	14502701	GUIDE SAFETY LEVER	1	60	14506001	SLIDE BLOCK	2				
28	21903501	POSITIONING PLATE	1	61	12105401	SPRING**	1				
29	18103202	SAFETY ADJUSTING NUT	1	64	HS05080B-16	HEX. SOC. HD. BOLT	1				
30	14503001	GUIDE PLATE	1	65	LN0500N	LOCK NUT	1				
30-1	18103101	SPRING	1	66	11106601	COVER	1				
31	14503101	SAFETY LEVER	1	67	12106401	AIR PLUG	1				
32	11103201	STEPPED PIN	1	68	OR40030N	O RING**	1				
33	OR02819N1	O RING**	1	70	13907001	COLLAR	1				
34	11003401	TRIGGER VALVE HEAD	1	71	US05080B-06	UN. HD. BOLT	1				