



## Spareparts

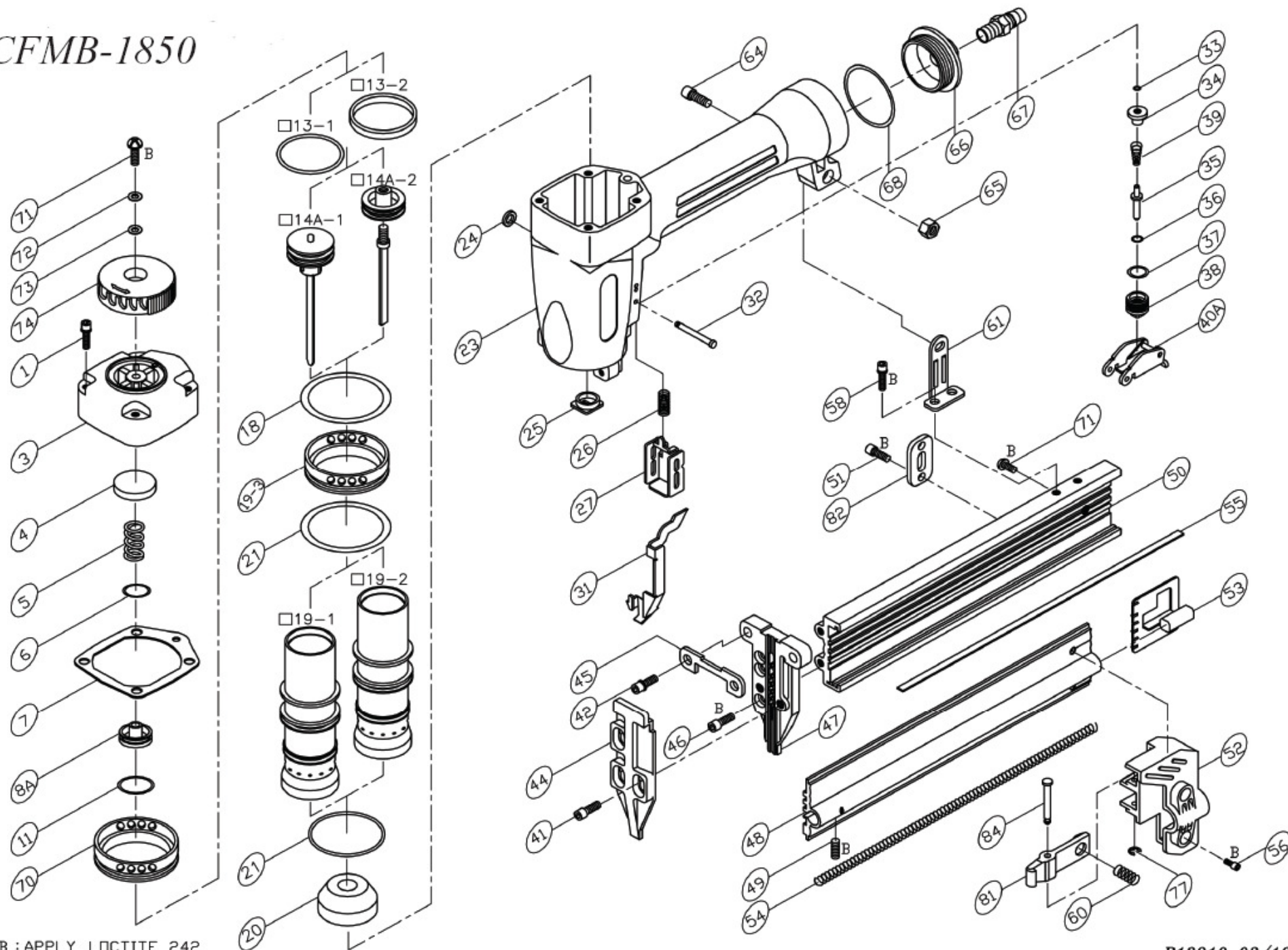


**CFMB-1850 MINI-BRADPISTOOL TOT 50 MM**

**CFMB-1850 PISTOLET MINI-BRAD JUSQU'À 50 MM CE**

**Bestelnr./N° de cde. 28036**

# CFMB-1850



\*B : APPLY LOCTITE 242

P13910 02/16/06

## PARTS LIST CFMB-1850

\*WHEN ORDERING SPARE PARTS,PLEASE STATE ITEM No.,PART NO.AND DESCRIPTION.

| ITEM  | PART NO      | DESCRIPTION           | QTY | ITEM | PART NO      | DESCRIPTION           | QTY | ITEM | PART NO | DESCRIPTION | QTY |
|-------|--------------|-----------------------|-----|------|--------------|-----------------------|-----|------|---------|-------------|-----|
| 01    | HS05080BW-35 | HEX. SOC. HD. BOLT+SW | 4   | 42   | HS05080BW-20 | HEX. SOC. HD. BOLT+SW | 2   |      |         |             |     |
| 03    | 13900305     | CAP                   | 1   | 44   | 13104402     | DRIVER GUIDE COVER    | 1   |      |         |             |     |
| 04    | 12100401     | SEAL**                | 1   | 45   | 12104501     | SET PLATE             | 1   |      |         |             |     |
| 05    | 12100501     | SPRING**              | 1   | 46   | HS04070B-12  | HEX. SOC. HD. BOLT    | 2   |      |         |             |     |
| 06    | OR13824N     | O RING**              | 1   | 47   | 13104702     | DRIVER GUIDE          | 1   |      |         |             |     |
| 07    | 11100701     | CAP SEAL**            | 1   | 48   | 13104802     | MAGAZINE COVER        | 1   |      |         |             |     |
| 08A   | 13900801A    | HEAD VALVE ASM.       | 1   | 49   | SS04070B-12  | SET SCREW             | 1   |      |         |             |     |
| 11    | OR31824N     | O RING**              | 1   | 50   | 13905002     | MAGAZINE              | 1   |      |         |             |     |
| 13-1  | OR23735N     | O RING**              | 1   | 51   | HS04070B-06  | HEX. SOC. HD. BOLT    | 2   |      |         |             |     |
| 13-2  | 13901304     | PISTON RING           | 1   | 52   | 13905202     | END CORE              | 1   |      |         |             |     |
| 14A-1 | 13901401A    | DRIVER ASSEMBLY**     | 1   | 53   | 13105301     | PUSHER                | 1   |      |         |             |     |
| 14A-2 | 13901402A    | DRIVER ASSEMBLY**     | 1   | 54   | 12105401     | SPRING**              | 1   |      |         |             |     |
| 18    | OR44431N     | O RING**              | 1   | 55   | 12105501     | NAIL GUIDE LINER      | 1   |      |         |             |     |
| 19-1  | 13901902     | CYLINDER              | 1   | 56   | HS04070B-08  | HEX. SOC. HD. BOLT    | 2   |      |         |             |     |
| 19-2  | 13901902G    | CYLINDER              | 1   | 58   | HS04070BW-08 | HEX. SOC. HD. BOLT+SW | 2   |      |         |             |     |
| 19-3  | 13901903     | COLLAR                | 1   | 60   | 11106001     | SPRING**              | 1   |      |         |             |     |
| 20    | 13902001     | BUNPER**              | 1   | 61   | 13906103     | BRACKET               | 1   |      |         |             |     |
| 21    | OR35020N     | O RING**              | 2   | 64   | HS05080B-16  | HEX. SOC. HD. BOLT    | 1   |      |         |             |     |
| 23    | 13902301     | BODY                  | 1   | 65   | LN0500N      | LOCK NUT              | 1   |      |         |             |     |
| 24    | OR01919N     | O RING**              | 2   | 66   | 11106601     | COVER                 | 1   |      |         |             |     |
| 25    | 10902501     | JOINT GUIDE           | 1   | 67   | 12106401     | AIR PLUG              | 1   |      |         |             |     |
| 26    | 11002601     | SPRING                | 1   | 68   | OR40030N     | O RING**              | 1   |      |         |             |     |
| 27    | 11002702     | GUIDE SAFETY LEVER    | 1   | 70   | 13907001     | COLLAR                | 1   |      |         |             |     |
| 31    | 13203101     | SAFETY LEVER          | 1   | 71   | US05080B-06  | UN. HD. BOLT          | 2   |      |         |             |     |
| 32    | 12103202     | STEPPED PIN           | 2   | 72   | FW050120B-08 | FLAT WASHER           | 1   |      |         |             |     |
| 33    | OR02819N1    | O RING**              | 1   | 73   | 12103301     | SEAL                  | 1   |      |         |             |     |
| 34    | 11003401     | TRIGGER VALVE HEAD    | 1   | 74   | 13907403     | EXHAUST COVER         | 1   |      |         |             |     |
| 35    | 11003503     | TRIGGER VALVE STEM    | 1   | 77   | ER0250R      | E RING                | 1   |      |         |             |     |
| 36    | OR02515V     | O RING**              | 1   | 81   | 13908101     | STOPPER               | 1   |      |         |             |     |
| 37    | OR10719N     | O RING**              | 1   | 82   | 13908201     | SET PLATE             | 1   |      |         |             |     |
| 38    | 11003803     | TRIGGER VALVE GUIDE   | 1   | 84   | 13908401     | STEPPED PIN           | 1   |      |         |             |     |
| 39    | 11006901     | SPRING                | 1   |      |              |                       |     |      |         |             |     |
| 40A   | 15104501A    | TRIGGER ASSEMBLY      | 1   |      |              |                       |     |      |         |             |     |
| 41    | HS05080B-10  | HEX. SOC. HD. BOLT    | 3   |      |              |                       |     |      |         |             |     |