



## Spareparts



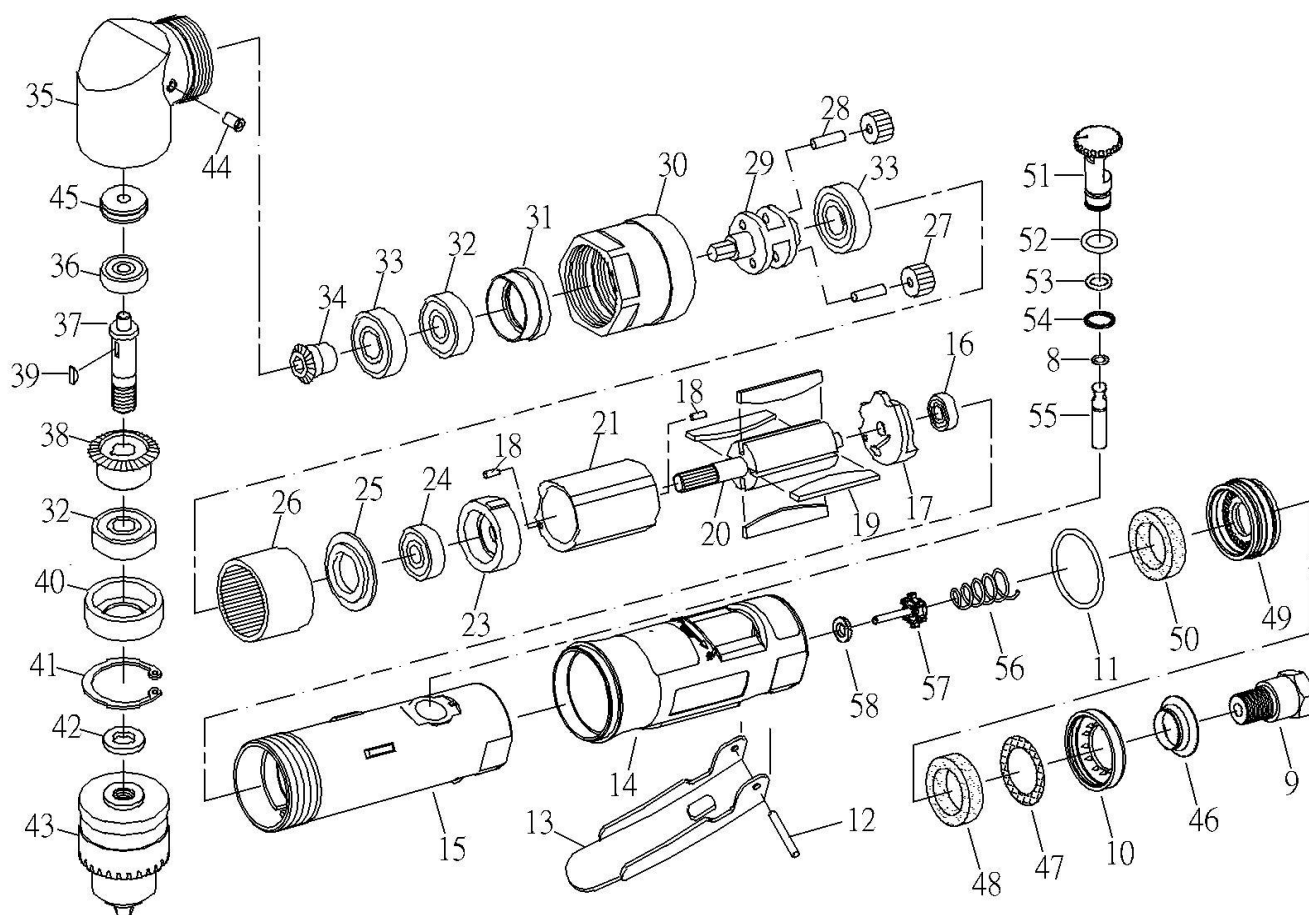
**Haaks boormachine L/R**

**Perceuse verticale G/D**

**CE**

**Bestelnr./N° de cde. 29008**

# 3/8" 90° ANGLE AIR DRILL



NO	PART NO	DESCRIPTION	Q'TY		NO	PARTS NO	DESCRIPTION	Q'TY	
08	OB-04	O-RING (3.5*1.4)	1		34	22534	BEVEL GEAR (15T)	1	
09	ST200A09	AIR INLET	1		35	ST22535	ANGLE HOUSING	1	
10	ST20010	EXHAUST SLEEVE	1		36	22536A	BALL BEARING (626)	1	
11	70011	O-RING (26.7*1.78)	1		37	ST165043	SHAFT	1	
12	12012,1	SPRING PIN (3*24)	1		38	22538	BEVEL GEAR (30T)	1	
13	70013BK	LEVER	1		39	ST70407	KEY	1	
14	ST200A14	PROTECTING RUBBER	1		40	22540	BEARING BUSHING	1	
15	ST200A15	HOUSING	1		41	22541	RETAINER RING	1	
16	20312	BEARING (696ZZ)	1		42	20329	WASHER	1	
17	ST70017	REAR PLATE	1		43	22543	3/8"CHUCK	1	
18	70018	PIN (2.5*6)	2		44	21029	OIL CUP	1	
19	20019	ROTOR BLADE	4		45	ST165041	BEARING	1	
20	ST165021	ROTOR (9T)	1		46	ST20036	MUFFLER BODY	1	
21	ST70021	CYLINDER	1		47	ST20037	STAINLESS MESH	1	
23	ST70023	FRONT PLATE	1		48	ST20035	SILENCER	1	
24	21024	BEARING (608ZZ)	1		49	ST20034	MUFFLER	1	
25	50310	WASHER	1		50	ST20035A	SILENCER	1	
26	ST165028	THREAD RING GEAR	1		51	ST200A37	REGULATOR	1	
27	70027	IDLER GEAR (16T)	2		52	OB-02	O-RING (P10)	1	
28	70028	IDLER GEAR PIN	2		53	ST288303	O-RING (P9)	1	
29	70029	IDLER GEAR PLATE	1		54	OB-30	SNAP RING	1	
30	ST165032	CLAMP NUT	1		55	ST200A33	VALVE STEM	1	
31	22531	BEARING BUSHING	1		56	ST200A43	SPRING	1	
32	70048A	BEARING (6000ZZ)	2		57	ST200A44	VALVE	1	
33	OB-31	BEARING (6001Z)	2		58	ST200A45	WASHER	1	