

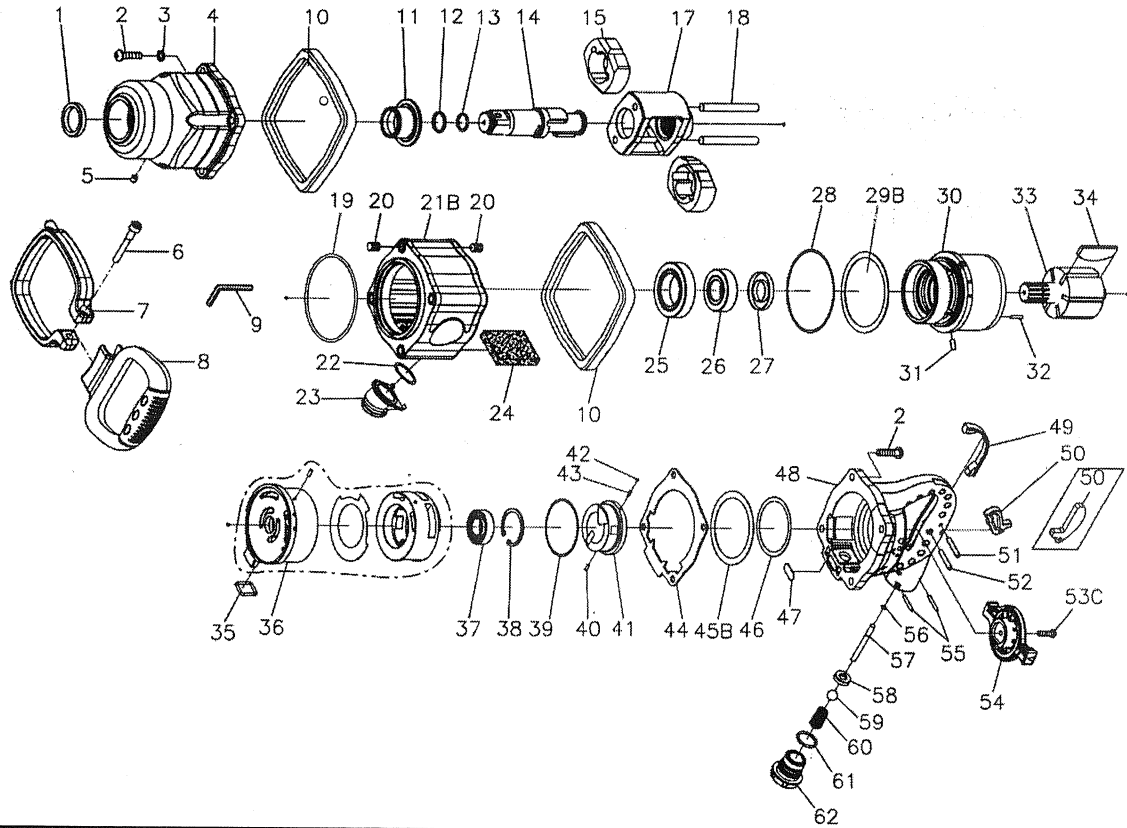


## Spareparts



**SLAGMOERSLEUTEL LANG 1" COMPOSITET**  
**CLE A CHOC LONGUE 1" COMPOSITE** **CE**  
**Bestelnr./N° de cde. 29009**

# 1" PROFESSIONAL AIR IMPACT WRENCH



Index No.	Part No.	Description	Q'ty	Index No.	Part No.	Description	Q'ty
1	00-4218	Oil Seal	1	35	315F-041	Square Ring	1
2	00-1317	Cap Screw	8	36	315F-009	Rear End Plate	1
3	00-1804	Spring Washer	4		315F-033	Valve Sleeve Gasket	1
4	315G-002	Hammer Case	1		315F-029	Valve Sleeve	1
5	00-4606	Grease Fitting	1		315F-042	Pin	1
6	00-0135	Cap Screw	1	37	00-2325	Ball Bearing	1
7	318F-024	Handle Clamper	1	38	00-3112	Snap	1
8	318F-023	D-Type Handle	1	39	00-4193	O-Ring	1
9	00-3907	6mm Hex. Wrench	1	40	00-3307	Spring Pin	1
10	322-031	Housing Band	2	41	315F-021-B	Reverse Valve	1
11	315-010-B	Anvil Bushing	1	42	00-3805	Steel Ball	1
12	310-038	Anvil Collar	1	43	305F-034	Spring	1
13	00-4124	O-Ring	1	44	315F-032	Gasket	1
14	315G-011A8	Anvil	1	45B	325H-030	Rear Gasket	1
	315G-011B8	8" Anvil		46	315F-031	Washer	1
15	315-SR-017	Hammer	2	47	315F-038	Plate	1
17	315G-012	Hammer Cage	1	48	315F-004-B	Handle Frame	1
18	315G-016	Hammer Pin	2	49	315F-039	Rubber Protector	1
19	00-4187	O-Ring	1	50	315F-023	Trigger (Inner)	1
20	00-4304	Insert Recoil	8		328-023-B	Trigger (Outer)	
21B	315F-001-B	Motor Housing	1	51	00-3417	Pin	1
22	00-4191	O-Ring	1	52	00-3305	Spring	1
23	315F-037	Hose Adapter	1	53C	00-6201	Cap Screw	1
24	315F-044	Muffler	1	54	315F-022	Reverse Knob	1
25	00-2343	Ball Bearing	1	55	00-3358	Spring	2
26	00-2341	Ball Bearing	1	56	00-4190	O-Ring	1
27	00-4228	Oil Seal	1	57	315F-024-B	Valve Stem	1
28	00-4186	O-Ring	1	58	310-039	Bushing	1
29B	325H-045	Gasket	1	59	00-3804	Steel Ball	1
30	315F-006	Cylinder	1	60	322-027	Spring	1
31	00-3343	Spring Pin	1	61	00-4188	O-Ring	1
32	00-3303	Spring Pin	1	62	315F-025B	Air Inlet (1/2"PT)	1
33	315F-007	Rotor	1		315F-025C	Air Inlet (1/2"NPT)	
34	328-008	Rotor Blade	6				