



Spareparts



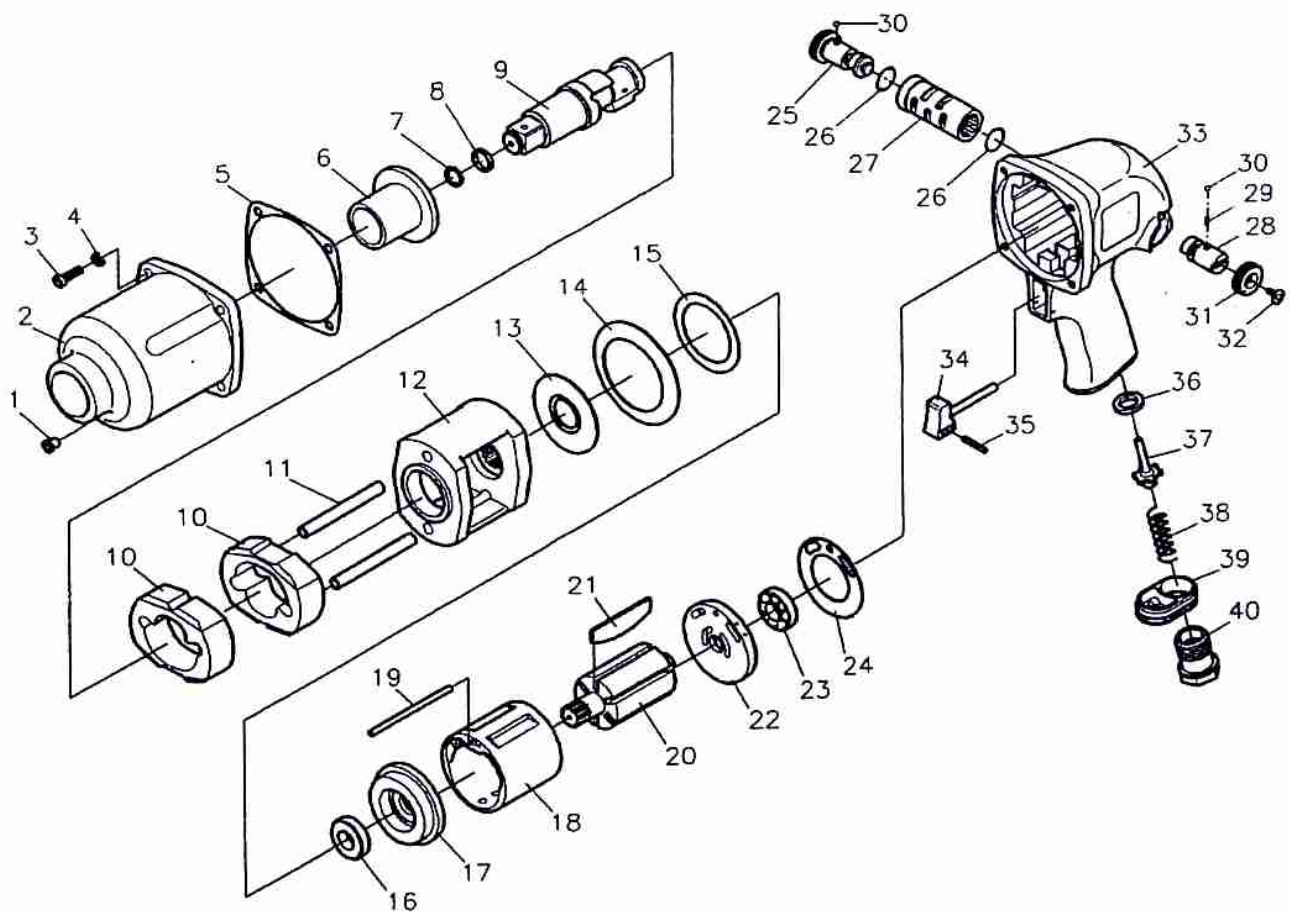
SLAGMOERSLEUTEL 3/4"

CLE A CHOC 3/4"

CE

Bestelnr./N° de cde. 29011

29011 / A10-285R 3/4" H/D Impact Wrench (Twin Hammer)



Index No.	Part No.	Description	Q'ty	Index No.	Part No.	Description	Q'ty
1	00-4604	Grease Fitting	1	22	305-009A	Rear End Plate	1
2	285R-002	Hammer Case	1	23	00-2305	Ball Bearing	1
3	00-0112	Cap Screw	4	24	303R-020	Rear Gasket	1
4	00-1803	Spring Washer	4	25	303R-022	Forward Regulator	1
5	285R-021	Front Gasket	1	26	00-4121	O-Ring	2
6	285R-010	Anvil Bushing	1	27	303R-021-B	Valve Sleeve	1
7	00-4175	O-Ring	1	28	303R-023	Reverse Regulator	1
8	280-028	Anvil Collar	1	29	303R-026	Spring	1
9	285C-011A6	Anvil	1	30	00-3805	Steel Ball	2
	285C-011B6	6" Anvil		31	303R-024	Regulator Knob	1
10	285C-017	Hammer	2	32	00-0501	Plane Head Screw	1
11	285C-016	Hammer Pin	2	33	285R-001	Motor Housing	1
12	285C-012	Hammer Cage	1	34	306-025	Trigger	1
13	285C-019	Rear Washer	1	35	00-3326	Spring Pin	1
14	285R-020	Motor Clamp Washer	2	36	306-027-B	Bushing	1
15	285R-019	Washer	1	37	306-026	Valve Stem	1
16	00-2312	Ball Bearing	1	38	306-028-B	Spring	1
17	285R-005	Front End Plate	1	39	305-021	Exhaust Deflector	1
18	285R-006	Cylinder	1	40	275-023A-B	Air Inlet (3/8"PF)	1
19	285R-023	Pin	1		275-023B-B	Air Inlet (3/8"PT)	
20	285R-007	Rotor	1		275-023C-B	Air Inlet (3/8"NPT)	
21	285R-008	Rotor Blade	6				