

## Spareparts



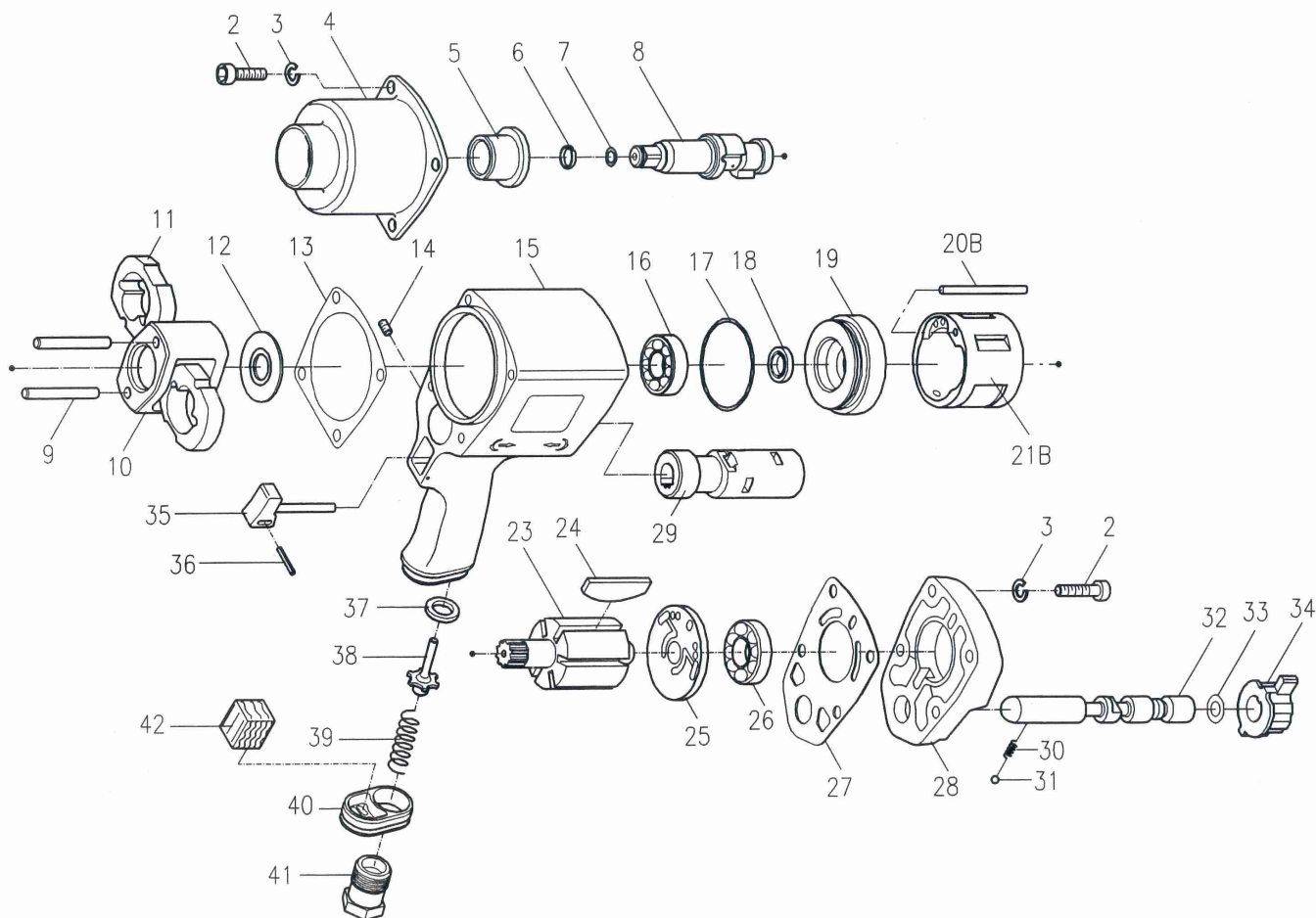
**SLAGMOERSLEUTEL 3/8" (14,4 V)**

**CLE A CHOC 3/8" (14,4 V)**

**CE**

**Bestelnr./N° de cde. 29018**

# 29016 / A10-243R4 1/2" H/D Impact Wrench (Twin Hammer)



Index No.	Part No.	Description	Q'ty	Index No.	Part No.	Description	Q'ty
2	00-0107	Cap Screw	8	23	243-007	Rotor	1
3	00-1802	Spring Washer	8	24	242-008	Rotor Blade	6
4	242-002	Hammer Case	1	25	242-009	Rear End Plate	1
5	243-010	Anvil Bushing	1	26	00-2326	Ball Bearing	1
6	242-026	Anvil Collar (3/8" Anvil)	1	27	242-023-B	Rear Gasket	1
	250-033	Anvil Collar (1/4" Anvil)		28	242-003	Rear Cover	1
7	00-4144	O-Ring (3/8" Anvil)	1	29	242-019	Valve Sleeve	1
	00-4103	O-Ring (1/2" Anvil)		30	306-031	Spring	1
8	243-011NA3	3/8" Anvil	1	31	00-3802	Steel Ball	1
	243-011NA4	1/2" Anvil		32	242-020	Reverse Valve	1
9	243-016	Hammer Pin	2	33	00-4145	O-Ring	1
10	243-012	Hammer Cage	1	34	305-022	Regulator Knob	1
11	243-017	Hammer	2	35	306-025	Trigger	1
12	243-020	Rear Washer	1	36	00-3326	Spring Pin	1
13	242-027-B	Front Gasket	1	37	306-027-B	Bushing	1
14	00-0612	Set Screw	1	38	306-026	Valve Stem	1
15	242-001	Motor Housing	1	39	306-028-B	Spring	1
16	00-2306	Ball Bearing	1	40	305-021	Exhaust Deflector	1
17	00-4135	O-Ring	1	41	242-024A	Air Inlet (1/4" PF)	1
18	00-4201	Oil Seal	1		242-024B	Air Inlet (1/4" PT)	
19	242-005	Front End Plate	1		242-024C	Air Inlet (1/4" NPT)	
20B	242-029	Pin	1	42	306-035	Muffler	1
21B	242-006-B	Cylinder	1				