

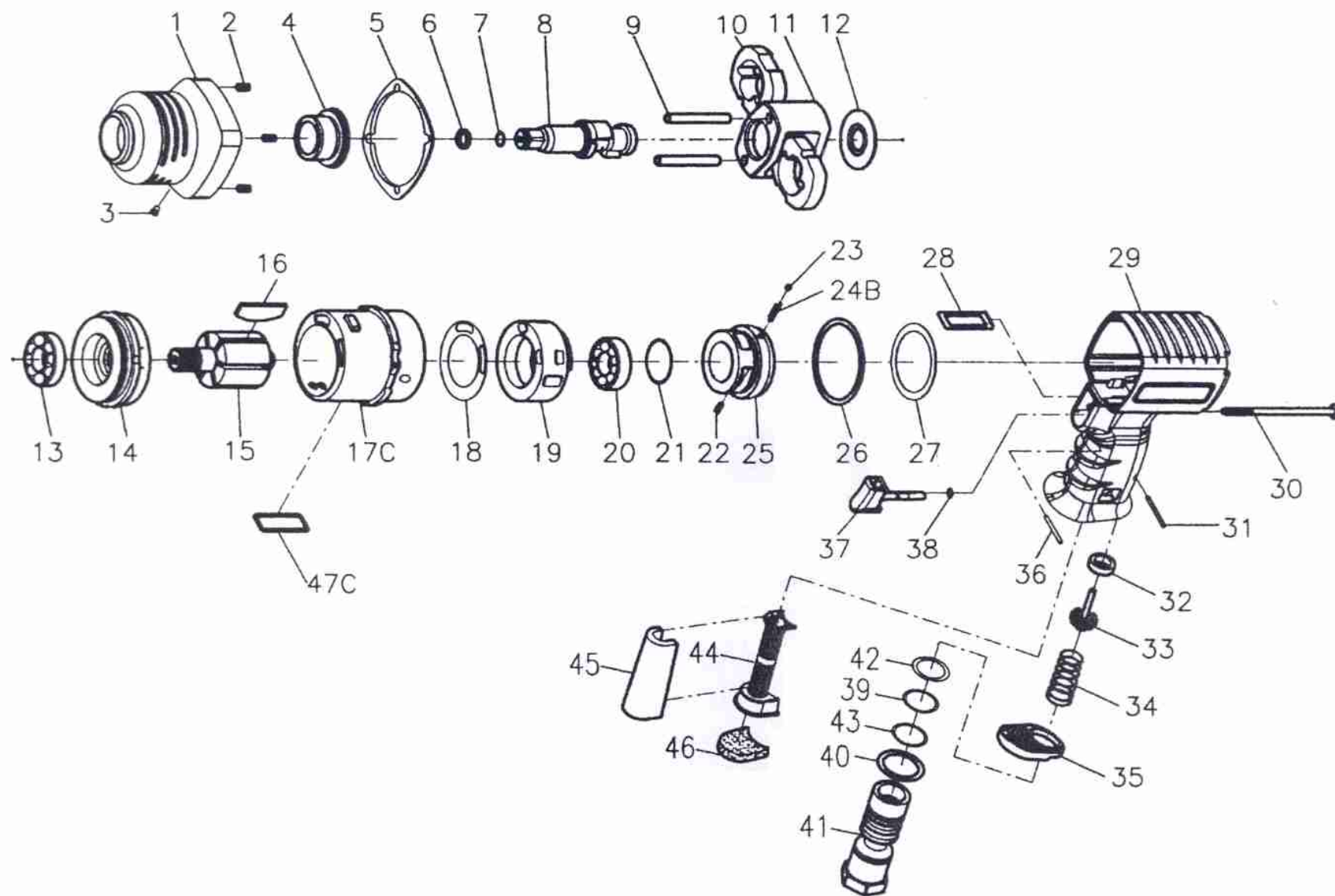


Spareparts



SLAGMOERSLEUTEL 1/2" MINI-COMPOSITET
CLE A CHOC 1/2" MINI-COMPOSITE **CE**
Bestelnr./N° de cde. 29020

29020 - 1/2" MINI-COMPOSIET



Index No.	Part No.	Description	Q'ty	Index No.	Part No.	Description	Q'ty
1	243H-002B	Hammer Case	1	24B	305F-034	Spring	1
2	00-4302	Inserts Recoil	4	25	243F-021	Regulator	1
3	00-4603	Grease Fitting	1	26	243F-030	Rear Gasket	1
4	242-010	Anvil Bushing	1	27	243F-031	Washer	1
5	243H-020	Front Gasket	1	28	243F-019	Air Channel Gasket	1
6	242-026	Anvil Collar (3/8" Square)	1	29	243H-001	Motor Housing	1
	250-033	Anvil Collar (1/2" Square)		30	243H-028	Screw	4
7	00-4144	O-Ring (3/8" Square)	1	31	00-3308	Spring Pin	1
	00-4103	O-Ring (1/2" Square)		32	306-027-B	Bushing	1
8	243F-011NA3	Anvil (3/8" Square)	1	33	306-026	Valve Stem	1
	243F-011NA4	Anvil (1/2" Square)		34	243H-023	Spring	1
9	243-016	Hammer Pin	2	35	243H-021	Exhaust Deflector	1
10	243-017	Hammer	2	36	00-3346	Spring Pin	1
11	243-012	Hammer Cage	1	37	243H-024	Trigger	1
12	243-020	Rear Washer	1	38	00-4101	O-Ring	1
13	00-2306	Ball Bearing	1	39	00-4143	O-Ring	1
14	243F-005	Front End Plate	1	40	305F-032	Washer	1
15	243F-007	Rotor	1	41	305F-025B-B	Air Inlet (1/4" PT)	1
16	243F-008	Rotor Blade	6		305F-025C-B	Air Inlet (1/4" NPT)	
17C	243F-006-B	Cylinder	1	42	00-4126	O-Ring	1
18	243F-033	Valve Sleeve Gasket	1	43	00-4127	O-Ring	1
19	243F-029	Valve Sleeve	1	44	243H-019B	Muffler Tube	1
20	00-2326	Ball Bearing	1	45	243H-026	Muffler	1
21	00-4158	O-Ring	1	46	243H-027	Muffler	1
22	00-3345	Spring Pin	1	47C	243F-041	Square Ring	1
23	00-3805	Steel Ball	1				