

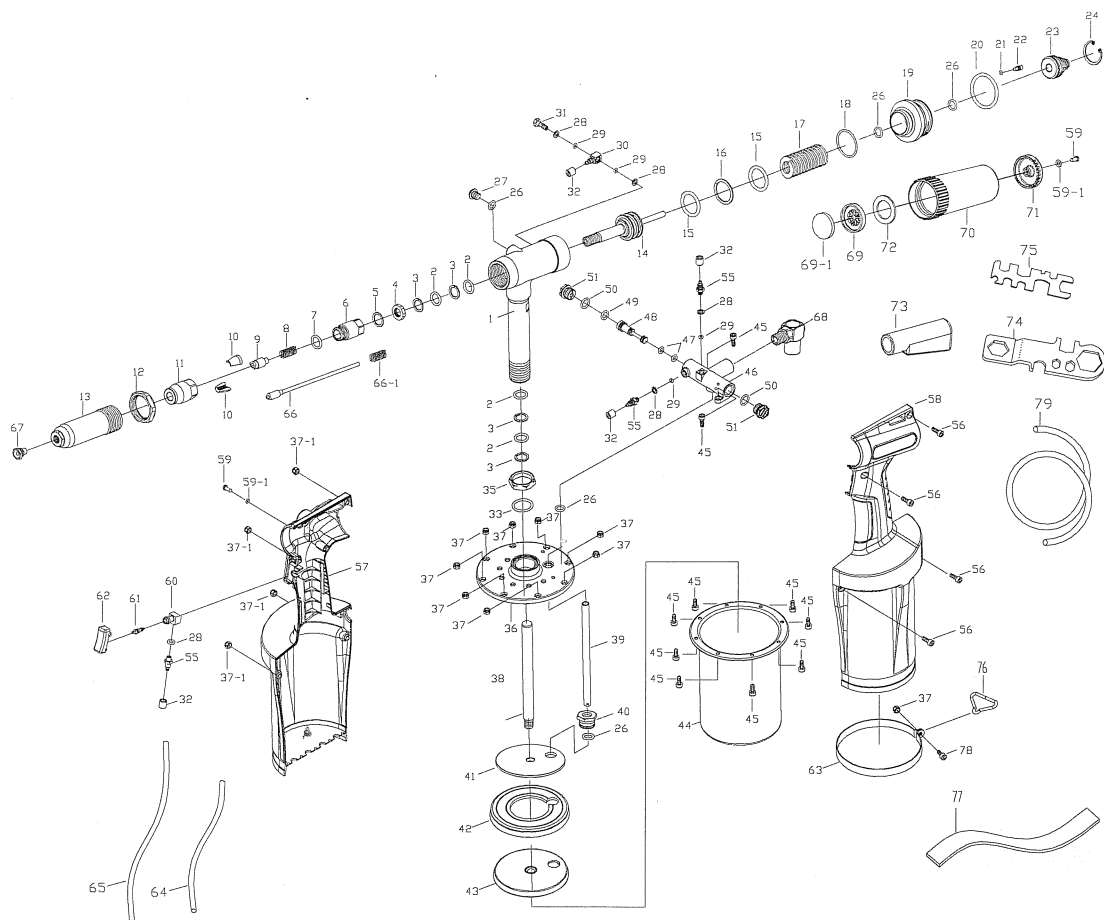


Spareparts



BLINDNIETMACHINE HEAVY DUTY COMPOSIT
RIVETEUSE HEAVY DUTY COMPOSITE **CE**
Bestelnr./N° de cde. 29027

A16-O3817 1/4" (6.4mm) Cap. Air-Hydraulic Riveter W / Vacuum



A16-O3817 1/4" (6.4mm) Cap. Air-Hydraulic Riveter W / Vacuum

TECHNICAL DATA

Blind Rivet Setting Capacity

Operating Air Pressure
Traction Power @ 90 Psi
Avg. Air Consumption
Stroke Length
Tool Height
Tool Width
Tool Weight
Min. Hose Size
Air Inlet Size
Hydraulic Fluid

: All blind rivets and blind structural rivets up to and including 1/4"(6.4mm) diameter in all materials.
: 5 - 7 Bar (70 - 100 Psi)
: 1,800 KgF (4,013 LbF)
: 3.5 L (0.125 Ft³) per rivet cycle
: 21mm (13/16")
: 348mm (13-3/4")
: 240mm (9-1/2")
: 2.3Kg (5.1Lb)
: 9.5mm (3/8") I.D.
: 1/4" NPT
: Shell Hydraulic Fluid or Equivalent

PARTS LIST

Index	Part#	Description	Index	Part#	Description	Index	Part#	Description
1.	821101A	Hydraulic Section Ass'y	29.	OR0306	O-Ring (4)	59	ST0310	Screw (2)
2.	OR1217	O-Ring (4)	30.	612712	Swivel	59-1.	PW0306	Washer (2)
3.	BR1217	Back-Up Ring (4)	31.	612713	Socket	60.	107602	Air Relieve Valve
4.	214306	Nut	32.	612711	Gap (4)	61.	107601	Hose Joint
5.	WW1317	Wave Washer	33.	OR2025	O-Ring (1)	62.	107201	Trigger
6.	819305	Jaw Housing Coupler	35.	918106	Lock Nut	63.	919106	Housing Clamp
7.	OR1417	O-Ring	36.	919401	Upper Cover	64.	821902	Air Hose-short
8.	819308	Spring	37.	NN0407B	Nut (9)	65.	821912	Air Hose-Long
9.	214302	Jaw Pusher	37-1	HN004070	Nut (4)	66.	819312	Jaw Pusher (For all rivets under size 3/16"
10.	819303	Jaw "L" (2)	38.	821501	Plunger Rod	67.	612706	NosePiece 3/16"(4.8mm)
11.	819324	Jaw Housing	39.	821403	Air Inlet Tube		*612716	NosePiece 3/16"(4.8mm)-"T"Rivet (Opt.)
12.	819106	Lock Nut	40.	919514	Rubber Seal		612708	NosePiece 1/4" (6.4mm)
13.	819105	Head	41.	919503	Front Head Disc		*612718	NosePiece 1/4" (6.4mm)-"T"Rivet (Opt.)
14.	821301	Hydraulic Plunger	42.	919505	Packing Ring	68.	92L2P	Swivel Inlet
15.	OR2431	O-Ring (2)	43.	919502	Lower Plate	69.	919903	End Cap
16.	BR2431	Back-Up Ring	44.	821402	Air Cylinder Body	69-1.	919904	Buffer Mat'l
17.	918309	Return Spring (Y)	45.	040710	Set Screw (10)	70.	919901	Collection Bottle
18.	OR3034	O-Ring	46.	919201	Valve Case	71.	919906	Exhaust Deflector
19.	821112	Rear Gland	47.	OR0408	O-RING (2)	72.	919905	Muffler
20.	OR3542	O-Ring	48.	919202	Valve Stem	73.	612901	Deflector
21.	OR0205	O-Ring	49.	OR0711	O-RING	74.	612904	Multi-Wrench (A)
22.	919115	Regulator plug	50.	OR1014	O-RING (2)	75.	918905	Multi-Wrench (B)
23.	919116	VacuumRegulator	51.	107409	Inlet Plug (2)	76.	918907	Hanger
24.	CH2628	Suspension Ring	55.	612717	Socket (Lower) (3)	77.	821906	Arm Supporter
26.	OR0812	O-Ring (3)	56.	040712	Set Screw (4)	78.	040714	Set Screw
27.	081308R	Set Screw	57.	821105R	Plastic Grip-Right	*79.	612902	Guide Hose (Opt.)
28.	612714	Washer (5)	58.	821105L	Plastic Grip-Left			