



Spareparts



BANDSCHUURMACHINE PRO

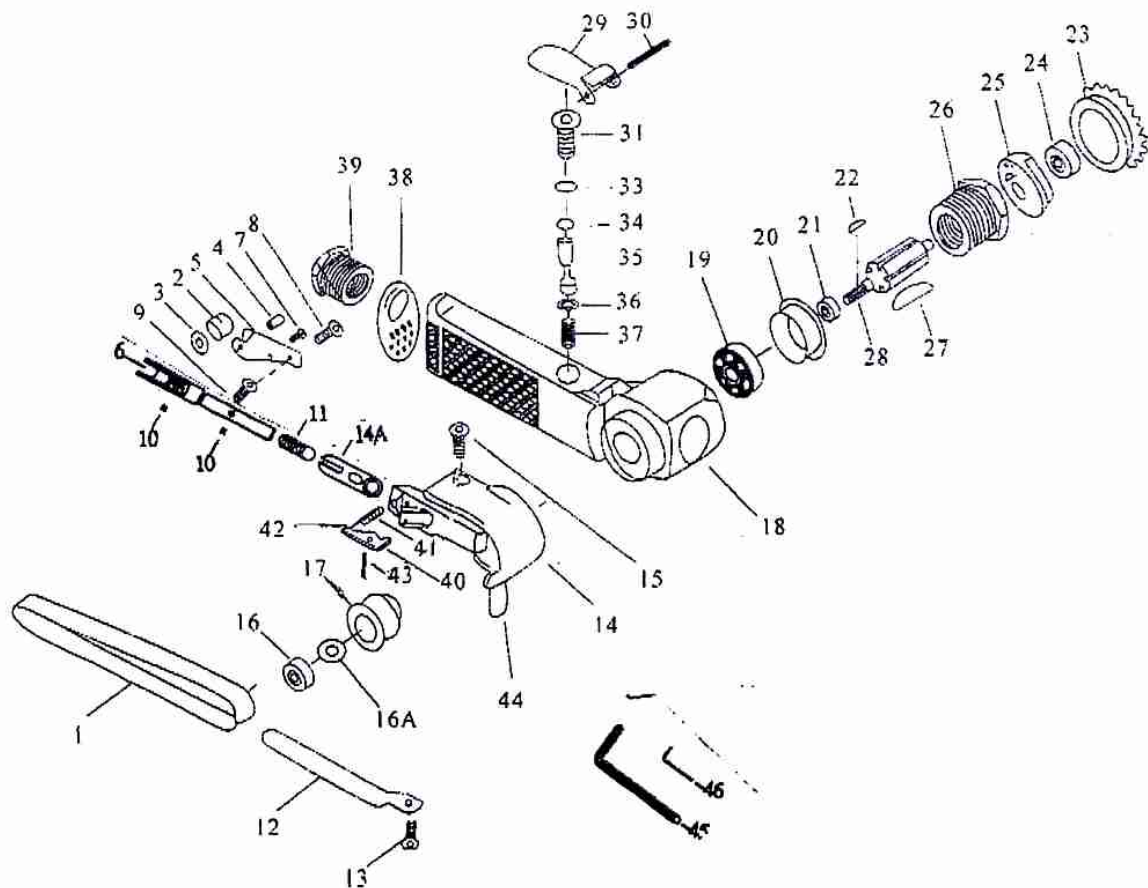
PONCEUSE A BANDE PRO

CE

Bestelnr./N° de cde. 29059

29059 / A16-309

Belt Sander 10x330mm



Index No.	Parts.No.	Description	Q'ty
1	309A01	Grinding Belt (#100)	1
1A	309A01A	Grinding Belt (#80)	1
1B	309A01B	Grinding Belt (#120)	1
2	309A02	Idle Pulley 10 Sub Assy	1set
2A	309A02A	Idle Pulley 10 Sub Assy	1
2B	BB-06842	Ball Bearing (684zz)	1
3	309A03	Washer	1
4	309A04	Idle Pulley Screw	1
5	309A05	Bracket 10	1
6	309A06	Tension Bar 10	1
7	S5-3010C	Hexagon Socket Headless Set Screw 3x10	1
8	SS-0308A	Cross-Recessed flat Head Mashine Screw 3x8	1
9	309A09	Spring 1.0x7.2x6.5	1
10	SP-30100	Spring Pin 3x10	2
11	309A11	Spring 1.07x4.0x35.5	1
12	309A12	shoe 10	1
13	S4-4008C	Cross-Recessed flat Head Mashine Screw 4x8	1
14	309A14	Guard Sud Assy A	1
14A	309A14A	Guard Bushing	1
15	B2-0515A	Hexagon Socket head Bolt 5x15	1
16	309A16	Hexagon Pulley	1
16A	309A016	Washer	1
17	309A17	Drive Pulley	1
18	309A18	Housing	1
19	BB-06282	BallBearing 628zz	1

Index No.	Parts.No.	Description	Q'ty
20	309A20	End Plate B	1
21	309A21	Spacer 8x11x3	1
22	K-030310	Sunk Key 3x3x1	1
23	309A23	Cap	1
24	BB-06072	Ball Bearing 607zz	1
25	309A25	End Plate A	1
26	309A26	Cylinder	1
27	309A27	Blade Assy (4pc/set)	1set
28	309A28	Rotor	1
29	309A29	Throttle Lever	1
30	SP-30230	Lever Pin	1
31	309A31	Valve Body	1
33	ORP-0090	O-Ring (P9)	2
34	ORP-0050	O-Ring (P5)	1
35	309A35	Valve Stem	1
36	302034	O-Ring (3.6x2.4)	1
37	309A37	Valve Spring	1
38	309A38	Defrector	1
39	306003	Air Inlet	1
40	309A40	Tension Bar	1
41	309A41	Spring	1
42	SP-20060	Lever Pin (M2x6)	1
43	SP-25100	Lever Pin (M2.5x10)	1
44	309A44	Dust Cover	1
45	301036	Hexagon Wrench Key 4	1
46	309A39	Hexagon Wrench Key 1.5	1