



Spareparts



BANDSCHUURMACHINE PRO

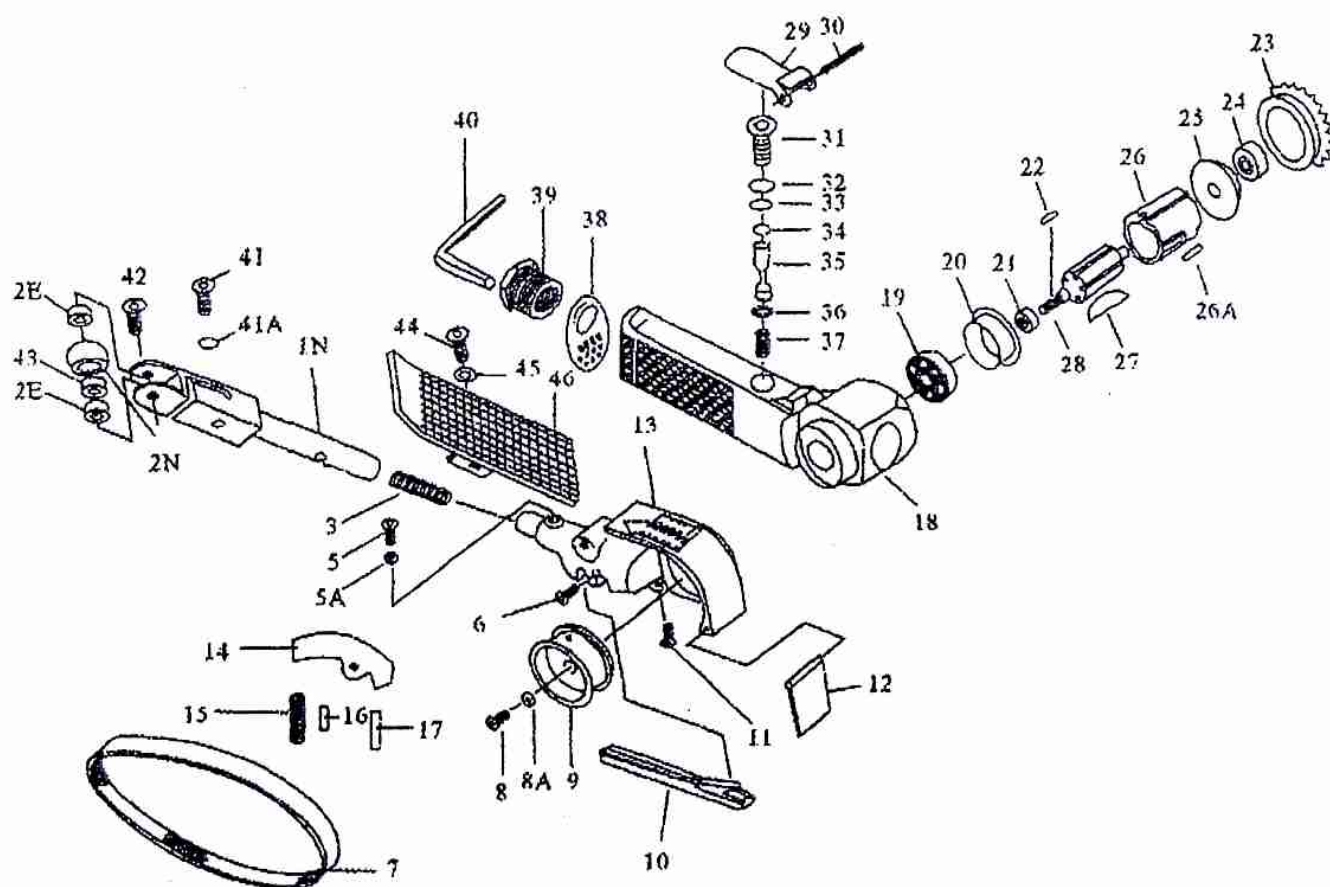
PONCEUSE A BANDE PRO

CE

Bestelnr./N° de cde. 29061

29061 / A16-311

20mm Belt Sander



Index No.	Parts.No.	Description	Qty
1N	311N001N	Idle Pulley Bracket Sub Assy	1
2	311N002	Idle Pulley Set (2N,2E,43)	1
2N	311N002N	Idle Pulley	1
2E	BB-06862	Ball Bearing 686zz	2
3	311003	Spring	1
5	311005	Hexagon Socket Head Bolt (M5x8)	1
5A	SWI-050B	Cup Spring (M5)	1
6	B2-0512A	Hexagon Socket Head Bolt (5x12)	1
7	311007	Grinding Belt (#100)	1
7A	311007A	Grinding Belt (#80)	1
8	B2-0616A	Hexagon Socket Head Bolt (6x16)	1
8A	311008A	Washer	1
9	311009	Drive Pulley	1
10	311010	Flat Shoe	1
11	B2-0515A	Hexagon Socket Head Bolt (5x15)	1
12	311012	Dust Cover	1
13	311013	Guard Body	1
14	311014	Tension Bar	1
15	311015	Spring	1
16	SP-20060	Lever Pin (φ 2x6)	1
17	SP-20080	Lever Pin (φ 2x8)	1
18	311018	Housing	1
19	BB-R62	Ball Bearing (R6zz)	1
20	311020	End Plate B	1
21	311021	Spacer 10x13x3	1
22	311022	Shank Key 2x2.5x10	1

Index No.	Parts.No.	Description	Qty
23	311023	Cap	1
24	BB-06261	Ball Bearing 626zz	1
25	311025	End Plate A	1
26	311026	Cylinder	1
26A	SP-30060	Pin (3x6)	1
27	311027	Blade Assy	5
28	311028	Rotor	1
29	309A29	Throttle Lever	1
30	SP-30230	Lever Pin (φ 3x23)	1
31	309A31	Valve Body	1
32	ORP-0090	O-Ring (P9)	1
33	ORP-0090	O-Ring (P9)	1
34	ORP-0050	O-Ring (P5)	1
35	309A35	Valve Stem	1
36	302034	O-Ring (3.6x2.4)	1
37	309A37	Valve Spring	1
38	309A38	Deflector	1
39	306003	Air Inlet	1
40	301036	Hexagon Wrench Key 4	1
41	311N041	Screw	1
41A	311N041A	C-Clipper	1
42	311N042	Idle Pulley Screw	1
43	311N043	Washer	1
44	B2-0616A	Screw	1
45	TWA060	Spring Washer (AW6)	1
46	311004	Finger Pad Assy	1