

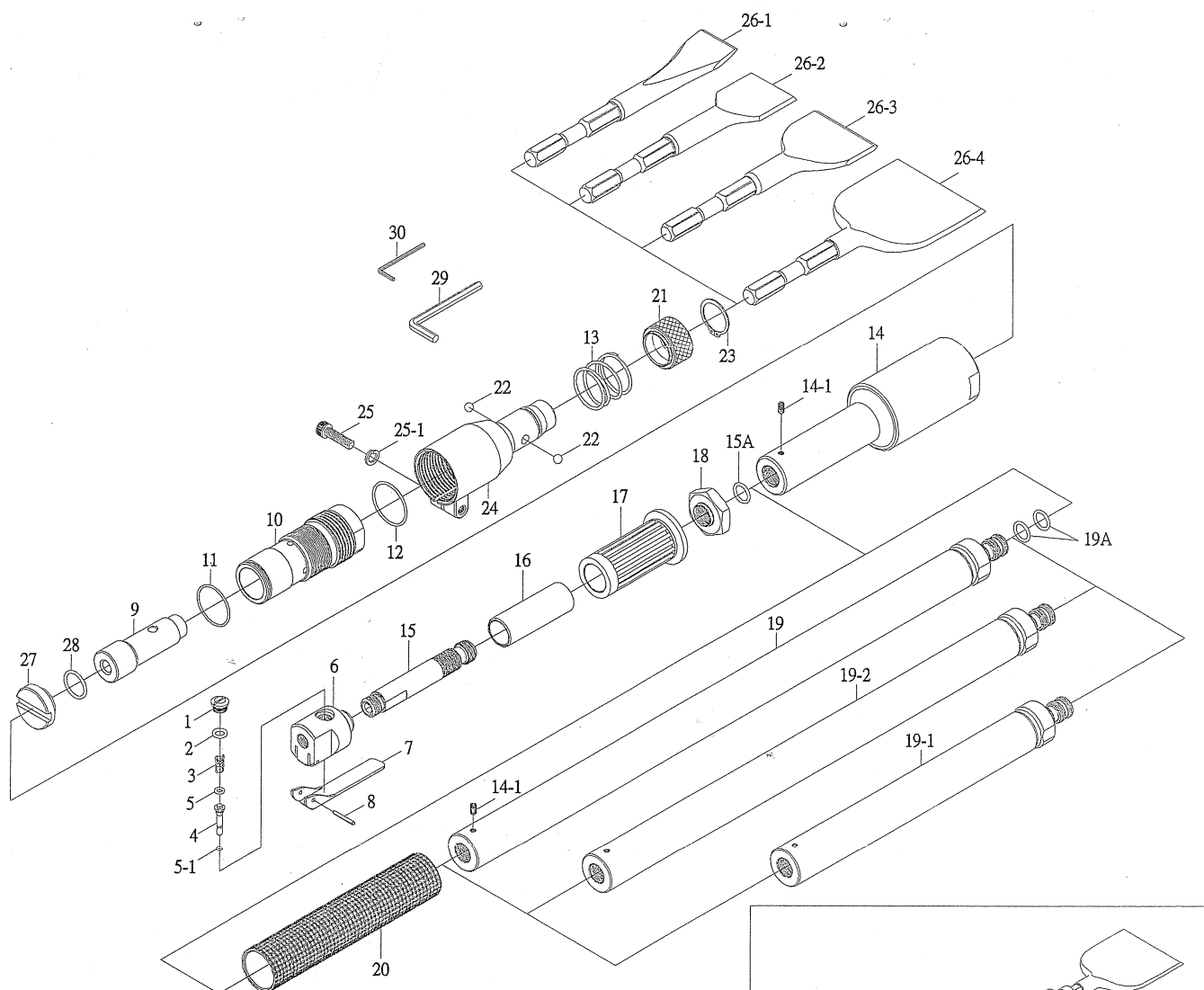


Spareparts



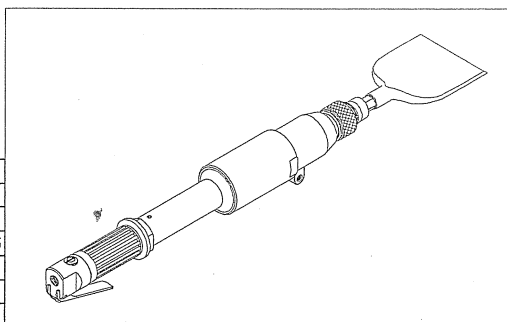
PROFESSIONELE SCHRAPER DELUX IN ALU
GRATTOIR PROFESSIONNEL DELUXE EN ALU CE
Bestelnr./N° de cde. 29099

LONG REACH SCRAPER KIT



SPECIFICATION:

*BLOW PER MINUTE-----	2400 BPM	*WEIGHT (KIT)-----	10.2 KG
*AIR CONS-----	10 CFM	*WEIGHT (3L)-----	4.7 KG
*AIR PRESSURE-----	90 PSI	*WEIGHT (4L)-----	7 KG
*HOSE SIZE-----	1/4"ID	*WEIGHT (5L)-----	7.7 KG
*PISTON SIZE(mm)-----	23.8×28.5×87	*WEIGHT (6L)-----	8.5 KG
*AIR INLET-----	1/4"PT (NPT)		



REF. NO.	PART NO.	DESCRIPTION	QTY	REF. NO.	PART NO.	DESCRIPTION	QTY
1	130-01	VALVE CAP	1	18	130-18	LOCK NUT	1
2	130-02	"O" RING (d7.8×W2.4) (P8)	1	19	130-19	GRIP COVER TUBE 600mm	1
3	130-03	VALVE SPRING	1	19-1	130-19-1	GRIP COVER TUBE 300mm	1
4	130-04	VALVE STEM	1	19-2	130-19-2	GRIP COVER TUBE 500mm	1
5	130-05	"O" RING (d4.8×W1.9) (P5)	1	19A	130-19A	"O" RING (d13.8×W2.4) (P14)	2
5-1	130-05-1	"O" RING (d2.5×W1.5)	1	20	130-20	RUBBER HANDLE GRIP	1
6	130-06	VALVE BODY	1	21	130-21	CHISEL COVER	1
7	130-07	THROTTLE LEVER	1	22	130-22	BALL (5/16")	2
8	130-08	SPRING PIN (Ø3×24L)	1	23	130-23	SNAP RING (S-30)	1
9	130-09	PISTON	1	24	130-24	CHISEL HOLDER	1
10	130-10	CYLINDER	1	25	130-25	CAP HEAD SCREW (5/16"×1-1/4")	1
11	130-11	"O" RING (d34.65×W1.78)	1	25-1	130-25-1	WASHER (5/16")	1
12	130-12	"O" RING (d36.0×W2.0)	1	26-1	130-26-1	CHISEL 40mm	1
13	130-13	SPRING	1	26-2	130-26-2	CHISEL 50mm	1
14	130-14	COVER ASS'Y	1	26-3	130-26-3	CHISEL 70mm	1
14-1	130-14-1	SCREW (5mm×0.8mm)	1	26-4	130-26-4	CHISEL 100mm	1
15	130-15	CENTRE TUBE	1	27	130-27	CYLINDER COVER	1
15A	130-15A	"O" RING (d13.8×W2.4) (P14)	1	28	130-28	"O" RING (d20.8×W2.4) (P21)	1
16	130-16	HANDLE TUBE	1	29	130-29	HEX. WRENCH (6mm)	1
17	130-17	RUBBER HANDLE GRIP	1	30	130-30	HEX. WRENCH (2.5mm)	1