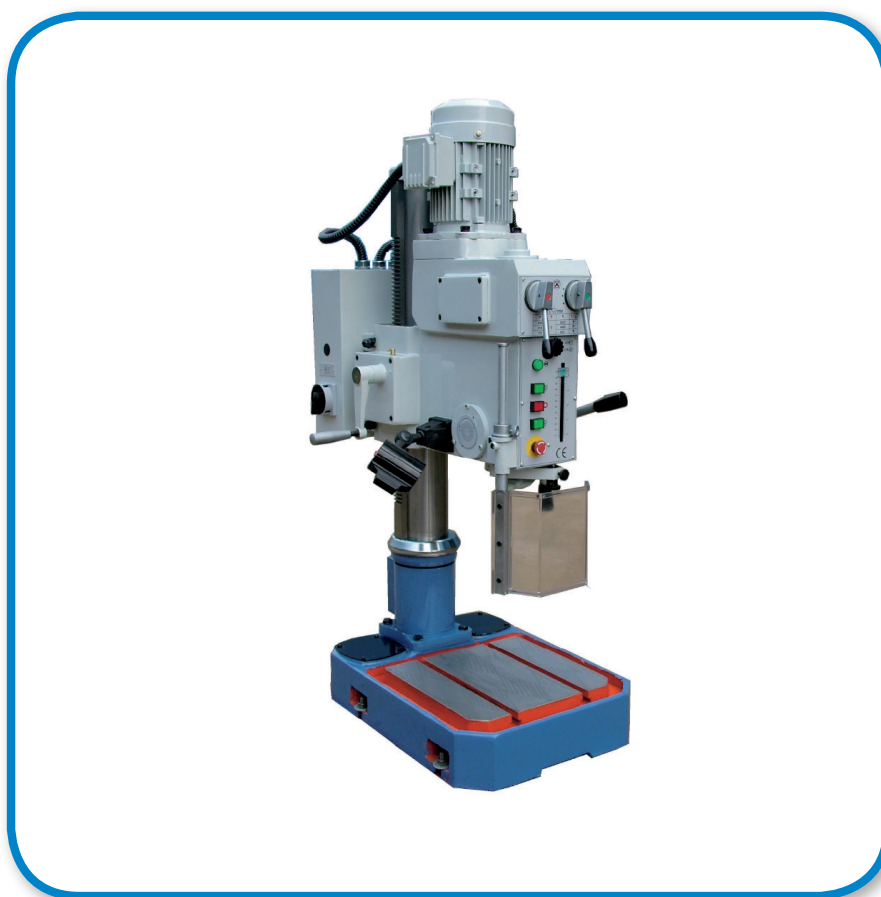


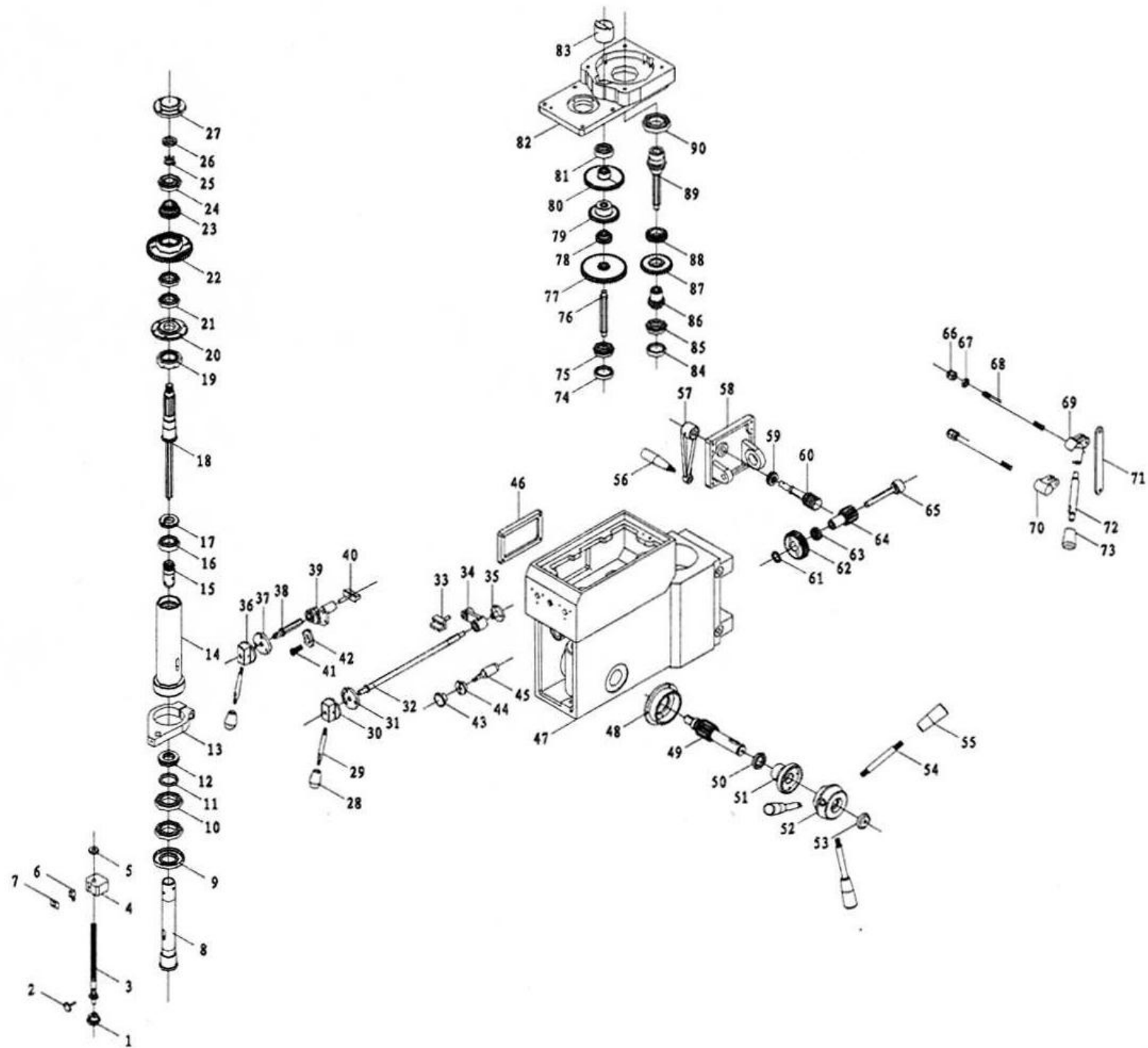
Spareparts

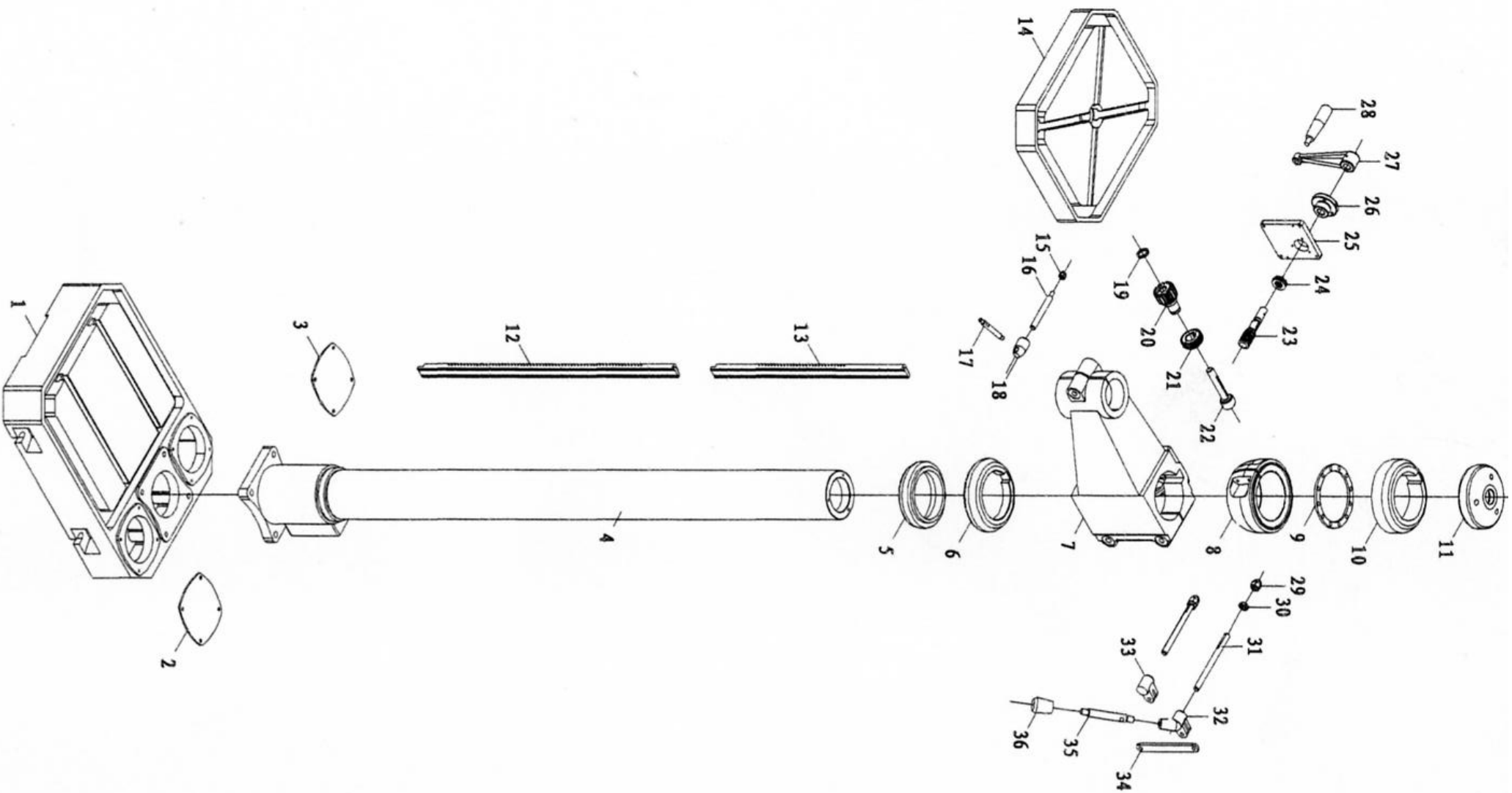


**TANDWIELAANGEDREVEN KOLOMBOORMACHINE
FOREUSE A ENTRAINEMENT PAR ENGRENAGE**

CE

Bestelnr./N° de cde. 35060





GT 30 F				
No.	Parts number	Name of the parts	Q'ty	Remarks
1	32001/ZS5030	Knurled nob	1	
2	32002/ZS5030	Knurled screw bolt	1	
3	32032/ZN25	Scaled screw	1	
4	31003/ZS5025	Scaled nut	1	
5	32005/ZS5030	Positioning block	1	
6	32004/ZS5030	Support for the indicator	1	
7	35001/ZS5030	Scaled indicator sheet	1	
8	32006/ZN25	Spindle	1	
9	32012/ZN25	Spindle cover	1	
10	D7000107; GB276	Bearing	2	
11	32011/ZN25	Washer	1	
12	8106;GB301	Bearing	1	
13	31004/ZN25	Scaled clamper	1	
14	32007/ZN25	Spindle quill	1	
15	32005/ZN25	Spline quill	1	
16	D105;GB276	Bearing	1	
17	32035/ZN25	Nut	1	
18	32008/ZN25	Transmission shaft	1	
19	2007106;GB297	Bearing	1	
20	32010/ZN25	Bearing cover	1	
21	7000105;GB276	Bearing	1	
22	32030/ZN25	Gear(8)	1	
23	32031/ZN25	Gear(9)	1	
24	50204; GB277	Bearing	1	
25	18;GB858	Washer	1	
26	M18X1.5; GB812	Nut	1	
27	31010/ZN25	Bearing cover	1	
28	1.222/30-M8/21001	Knob	2	
29	32033/ZN25	Lever	2	
30	32020/ZN25	Lever seat	1	
31	32014/ZN25	Positioning Washer	1	
32	32019/ZN25	Fork shaft	1	
33	34005/ZN25	Fork	1	
34	31007/ZN25	Right Lever	1	

GT 30 F				
No.	Parts number	Name of the parts	Q'ty	Remarks
35	34014/ZS5030	Bushing	1	
36	32021/ZN25	Lever seat	1	
37	32015/ZN25	Positioning washer	1	
38	32018/ZN25	Fork shaft	1	
39	31006/ZN25	Left lever	1	
40	34006/ZN25	Block	1	
41	32017/ZN25	Sleeve	1	
42	32016/ZN25	Positioning block	1	
43	BM8X32; GB4141.27	Knurled handle	1	
44	32045/ ZS5030	Bushing	1	
45	32022/ ZN25	Positioning shaft	1	
46	31002/ ZN25	Cover	1	
47	31001/ZN25	Spindle box	1	
48	31009/ZN25	Spring box	1	
49	32004/ZN25	Shaft	1	
50	31008/ ZN25	Washer	1	
51	32003/ ZN25	Shaft quill	1	
52	32002/ZN25	Lever seat	1	
53	32001/ZN25	Cover	1	
54	31034/ZN25	Feed lever	3	
55	35002/ZS5030	Nob	3	
56	M10×80;GB4141.5	Turning lever	1	D.L3.Cr
57	11014/ZS5030	Lifting lever of bracket	1	
58	31004/ ZS5032	Lifting seat	1	
59	8103;GB301	Bearing	1	
60	32001/ZS5032	Lifting worm	1	
61	12019/ZS5030	Washer	1	
62	31005/ ZS5032	Lifting worm for spindle box	1	
63	31006/ ZS5032	Quill	1	
64	32002/ ZS5032	Gear	1	
65	32003/ZS5032	Shaft	1	
66	M12;GB923	Cover type nut	2	
67	M12;GB6172	Hex thin nut	2	
68	32004/ZS5032	Double end bolt	2	
69	31004/ZS5025A	Lever seat	1	
70	11012/ ZS5030	Nut	1	

GT 30 F				
No.	Parts number	Name of the parts	Q'ty	Remarks
71	32036/ZN25	Connecting board	1	
72	M12×80;GB4141.15	Hand lever	1	D.L3.Cr
73	M12×40;GB4141.12	Hand sleeve	1	
74	31011/ZN25	Cover	1	
75	50203;GB277	Bearing	1	
76	32009/ZN25	II shaft	1	
77	32027/ZN25	Gear(5)	1	
78	32023/ZN25	Gear(1)	1	
79	32028/ZN25	Gear(6)	1	
80	32029/ZN25	Gear(7)	1	
81	302;GB276	Bearing	1	
82	31003/ZN25	Box cover	1	
83	31005/ZN25	Bearing quill	1	
84	31011/ZN25	Cover	1	
85	50302;GB277	Bearing	1	
86	32024/ZN25	Gear(2)	1	
87	32026/ZN25	Gear (4)	1	
88	32025/ZN25	Gear(3)	1	
89	32013/ZN25	I Shaft	1	
90	107;GB276	Bearing	1	