

Spareparts

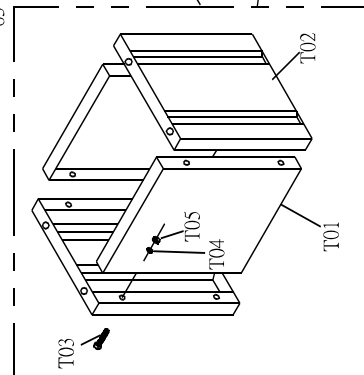
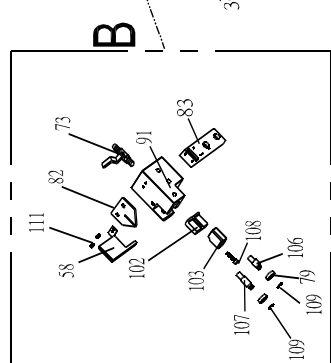
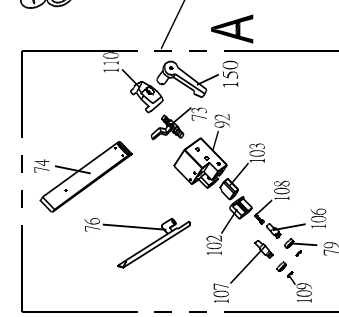
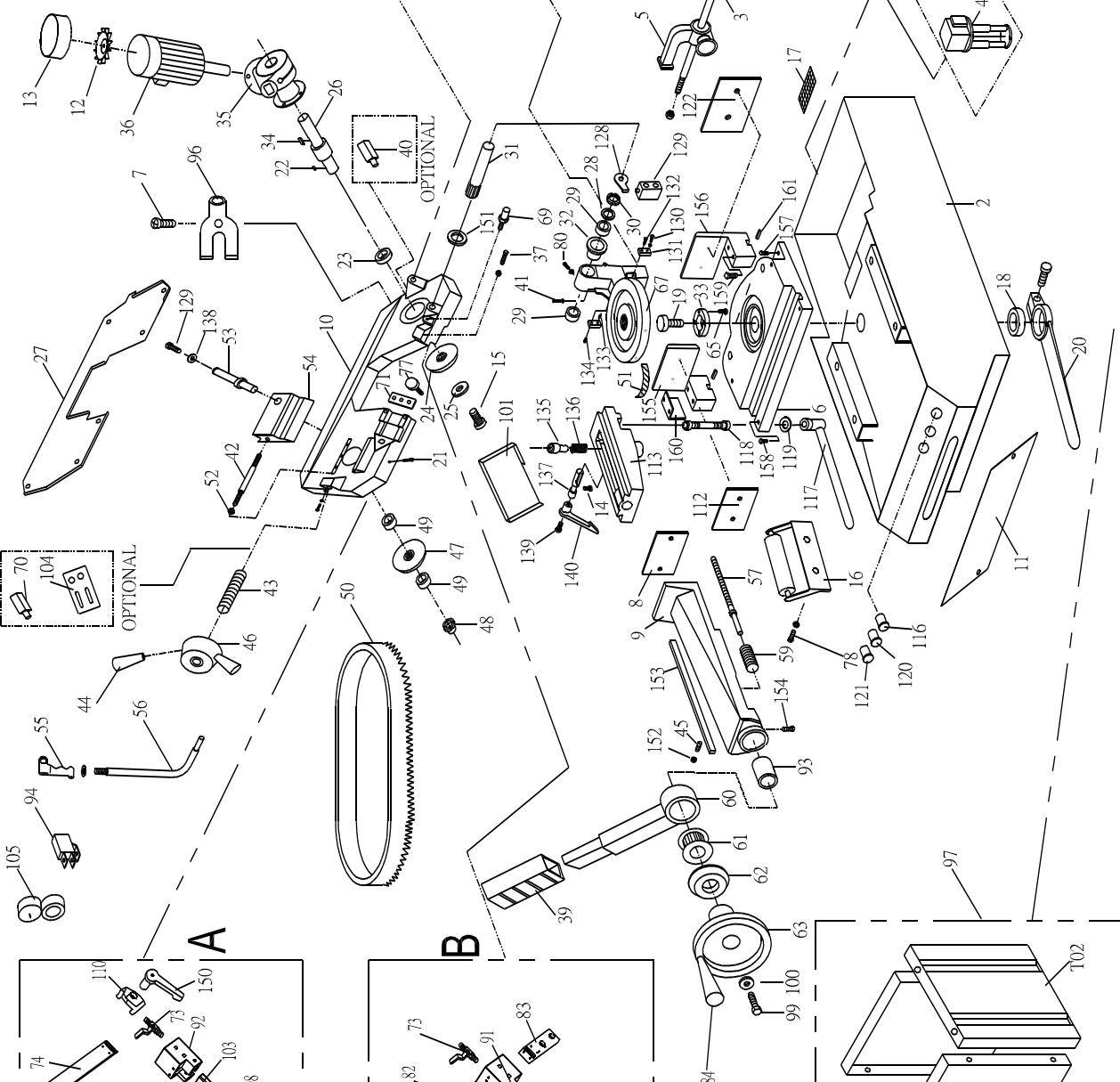
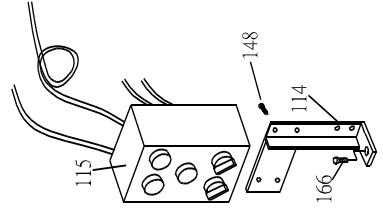
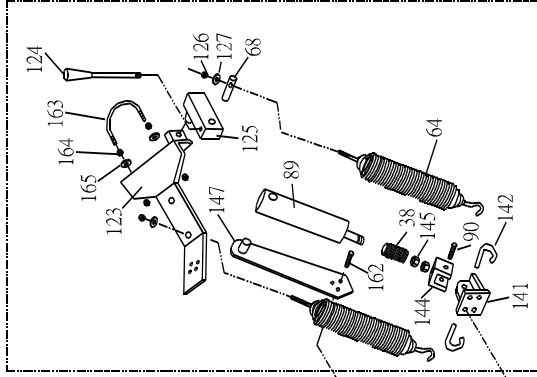


BS 325 VARIO

CE

Bestelnr./N° de cde. 50054

CY-300R



PARTS LIST CY300R

Ref. No. Description	Ref. No. Description	Ref. No. Description
2. Base/底座	57. Vicescrew/角牙桿	116. On /Off Oil Switch/油壓開關
3. Barstop rod/長度桿	58. R. Bladeguard/保護片(右)	117. Handle/把柄
4. Coolpump/冷卻馬達	59. Vicespring/彈簧	118. Bolt/螺栓
5. Barstop/長度板	60. Vicelever/虎鉗柄	119. Washer/華司
6. Countervice/虎鉗下座	61. Bearing 51105/培林	120. Adjusting Button/調整按鈕
7. Screw M5/ 螺絲	62. Bearing cover/培林蓋	121. Emergency Stop/緊急停止
8. Vice jaw/前檔板	63. Vicehandwheel/手輪	122. Screw/螺絲
9. Vice/虎鉗上座	64. Spring/彈簧	123. Bracket/彈簧支架
10. Body frame/鋸弓	65. Screw/螺絲	124. Handle/手柄
11. Casing/底座蓋	67. Revolving arm/旋轉座	125. Square/旋轉塊
12. Motor Fan/馬達風葉	68. Shaft/心軸	126. Nut/螺帽
13. Motor Cover/馬達蓋	69. Stop bolt/固定軸	127. Washer/華司
14. Screw/螺絲	70. Micro switch(optional)/ 微動開關	128. Cut off plate/切斷片
15. Screw/螺絲	71. Block/固定板	129. Screw/螺絲
16. Roller/滾筒	73. Rubber connection/冷卻螺絲	130. Screw/螺絲
17. Filter/網	74. Arm/長支架	131. Vice Jaw block/檔塊
18. Bush/旋轉螺帽	75. Bolt/螺栓	132. Screw/螺絲
19. Pin/旋轉軸	76. Blade guard/長保護片	133. Screw/螺絲
20. Lever/旋轉柄(把手)	77. Handle/任意把手	134. Screw/螺絲
21. Knob/鈕	79. Bearing 6082Z/培林	135. Crescent seat/半牙座
22. Key 7x7/鍵	80. Screw M8/螺絲	136. Spring/彈簧
23. Bearing 6208/培林	81. Waterpipe/水管	137. Shaft/心軸
24. Motor flywheel/下鋸輪	82. Rust plate/擋屑板	138. Washer/華司
25. Washer/蓋	83. Vicepad/虎鉗墊	139. Screw/螺絲
26. Shaft/鋸輪主軸	84. Handle/把手	140. Grip/把手
27. Blade cover/鋸弓護蓋	89. Hydraulic cylinder/油壓缸	141. Cylinder seat/油壓缸座
28. Ring nilons/套環	90. Pin/油壓缸螺絲	142. Spring hook/彈簧鉤
29. Bearing 32007/培林	91. Fixed bladeguide plate/培林座	144. □ seat/□型座
30. Ring nut M30/主軸帽	92. Mobile bladeguide plate/ 大培林座	145. Nut/螺帽
31. Pivot/支架軸	93. Bush/虎鉗套管	147. Bracket/油壓缸支架
32. Bearing cover/培林蓋	94. Torgerswitch/(手切)微動開關	148. Screw/螺絲
33. Washer/華司	95. Condenser(motor)(optional)/ 電容器	150. Grip/把手
34. Key 4x25/鍵	96. Coolant distributor/水分頭	151. Gasket/墊片
35. Reducer/齒輪箱	97. Stand/腳架	152. Nut/螺帽
36. Motor/馬達	99. Screw M8*15/螺絲	153. Key/鍵片
37. Screw/螺絲	100. Washer/華司	154. Screw/螺絲
38. Spring/彈簧	101. Plate/水盤	155. Vice seat L./左虎鉗座
39. Plastic case/手把套	102. Bladeguide unit square/ 鋤鋼導塊(方型)	156. Vice seat R./右虎鉗座
40. Micro switch(optional)/ 微動開關	103. Bladeguide unit/鋤鋼導塊	157. Screw/螺絲
41. Screw M8/螺絲	104. Blade tension guide(optional) /開關架	158. Screw/螺絲
42. Threaded shaft/拉塊桿	105. Blade tension gauge /壓力錶	159. Screw/螺絲
43. Spring washer/彈簧片	106. Guide pivot/支架軸	160. L Board/L板
44. Grip/調整栓柄	107. Guide pivot/支架軸	161. Square Key/方鍵
45. Pin/調整螺絲	108. 33MM*MS Screw/螺絲	162. Screw/螺絲
46. Handwheel/手輪	109. C-ring/C型扣	162. Screw/螺絲
47. Return flywheel/上鋸輪	110. Fixed plate/壓板	164. Nut/螺帽
48. Hex. Nut/螺帽	111. Screw/螺絲	165. Washer/華司
49. Bearings 32006/培林	112. Vice jaw/前檔板	166. Screw/螺絲
50. Saw blade/鋸片	113. Vice sliding seat/虎鉗滑座	
51. Scale/表尺	114. Switch Bracket/開關支架	
52. Hex. Nuts/螺帽	115. Electrical box/電器盒	
53. Blade sheel shaft/上鋸輪軸		
54. Block bladetension/滑座		
55. Handle/手柄		
56. Lever/手柄桿		