

Spareparts

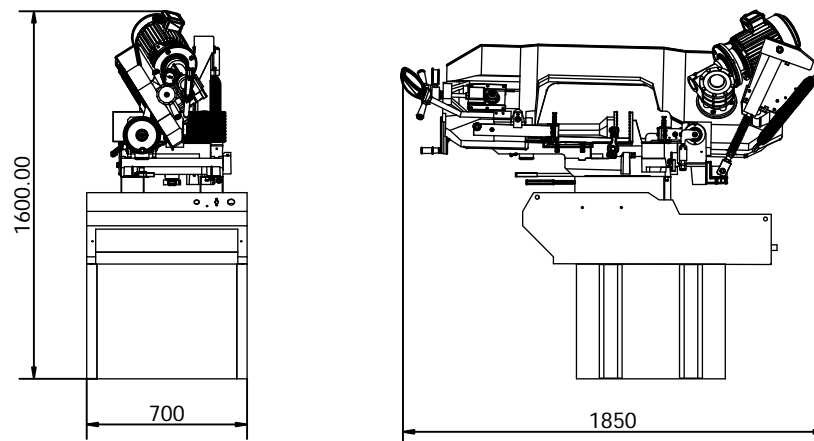





BS 350 VARIO

CE

Bestelnr./N° de cde. 50057

CY-350R



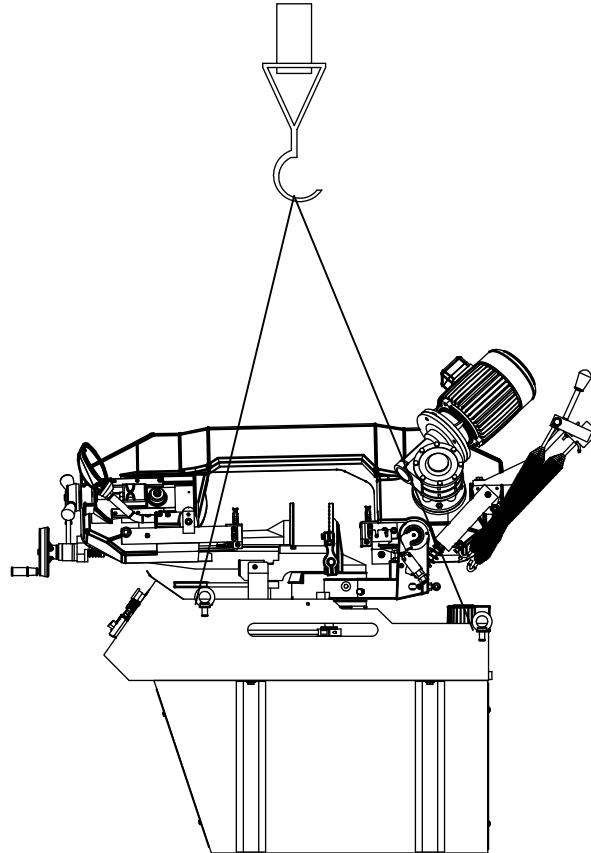
			
0°	270	270	260*370
45°	230	210	210*230
60°	140	140	140*140
-45°	180	170	160*200

TECHNICAL DATA

MOTOR	1.9 KW
COOL PUMP MOTOR	0.1 KW
CUTTING SPEED	35 / 70 (MPM)
CUTTING SPEED(INVERTER)	20~80 (MPM)
BLADE DIMENSIONS	2925*27*0.9 (MM)
WORKING TABLE HIGHT	1020 (MM)
N.W / G.W	550 /595(KG)
MEASUREMENTS / CUF	197CM*95CM*112CM (75.5 CUF)

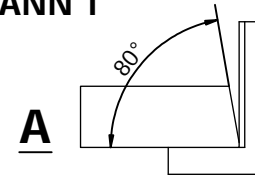
CY-350R

LOAD SUSPENSION

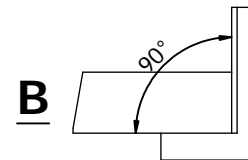


TO REMOVE CUTTING TROUBLE:

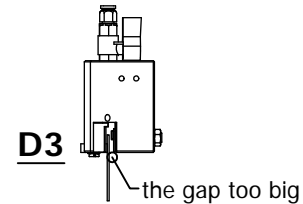
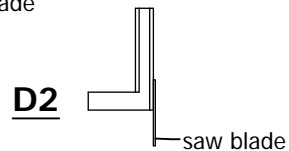
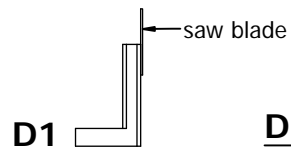
1. WHEN THE SAW BLADE CUTTING CANN'T BECOME 90°, FOR EXAMPLE PIC. A



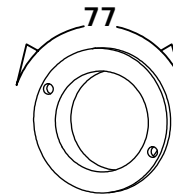
2. REPLACE THE SAW BLADE TO TR8 CUT AGAIN AND PLS CHECK PIC. B



3. INSPECT THE BLADE GUIDE PLATE AND SAW BLADES WHETHER BECOME 90°
PIC. D1,D2,D3



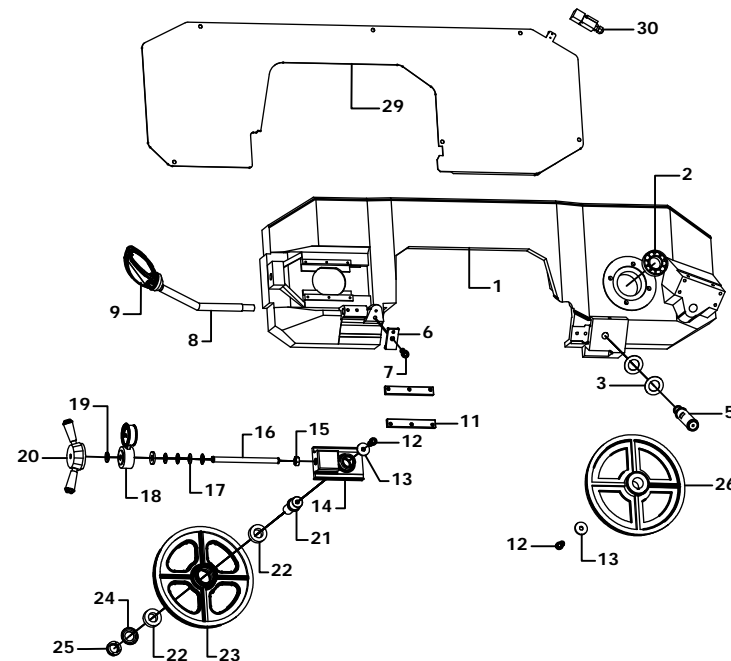
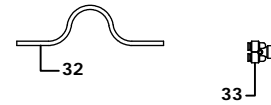
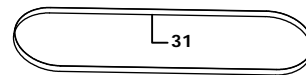
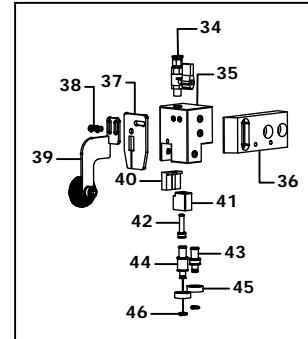
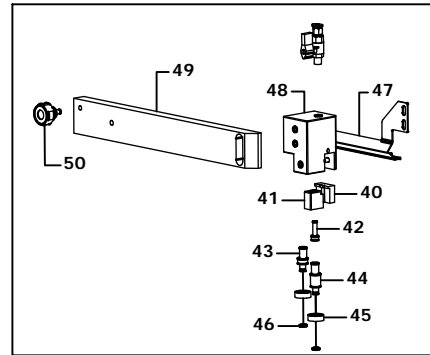
4. IF WILL NOT HAVE 90° ,PLS ADJUST 77# AND MAKE THE SAW BLADE TO BECOME 90° ,PIC. C



90° adjusting saw blade

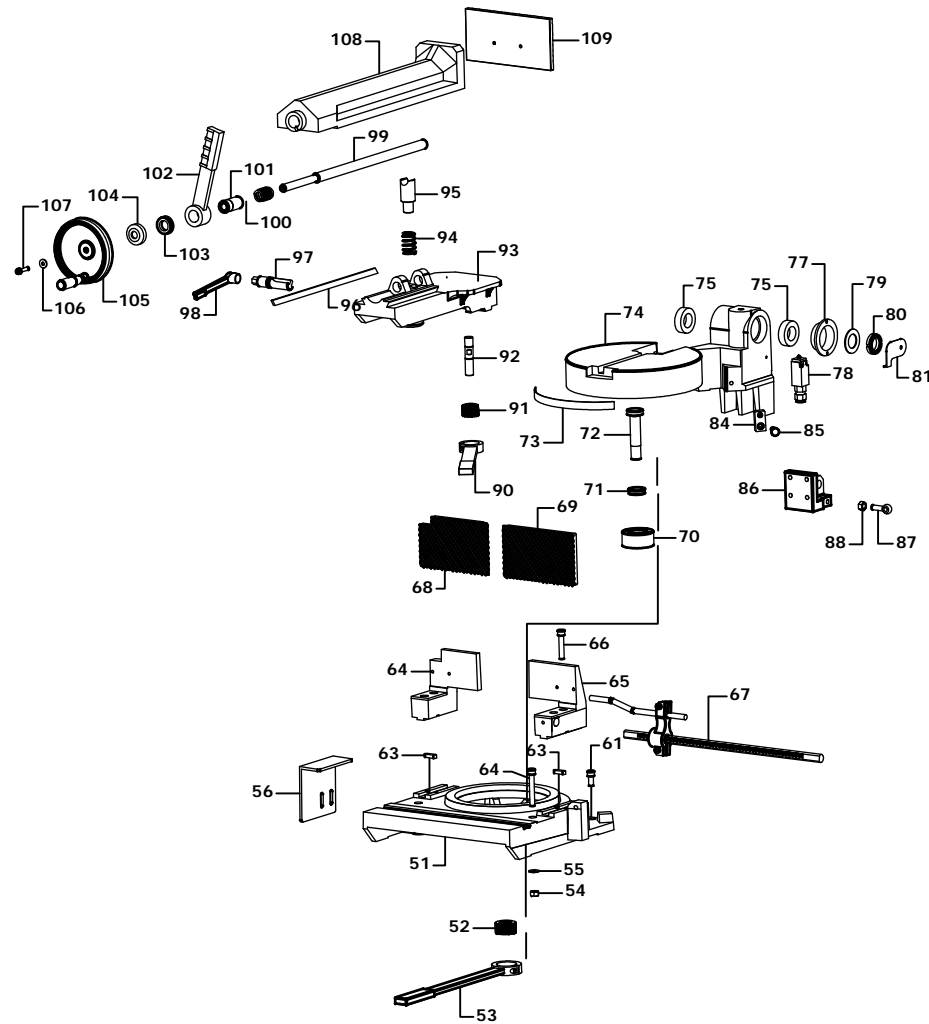
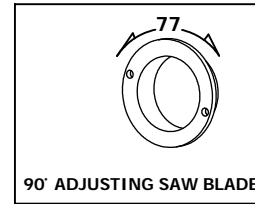
CY-350R

EXPLODED-A



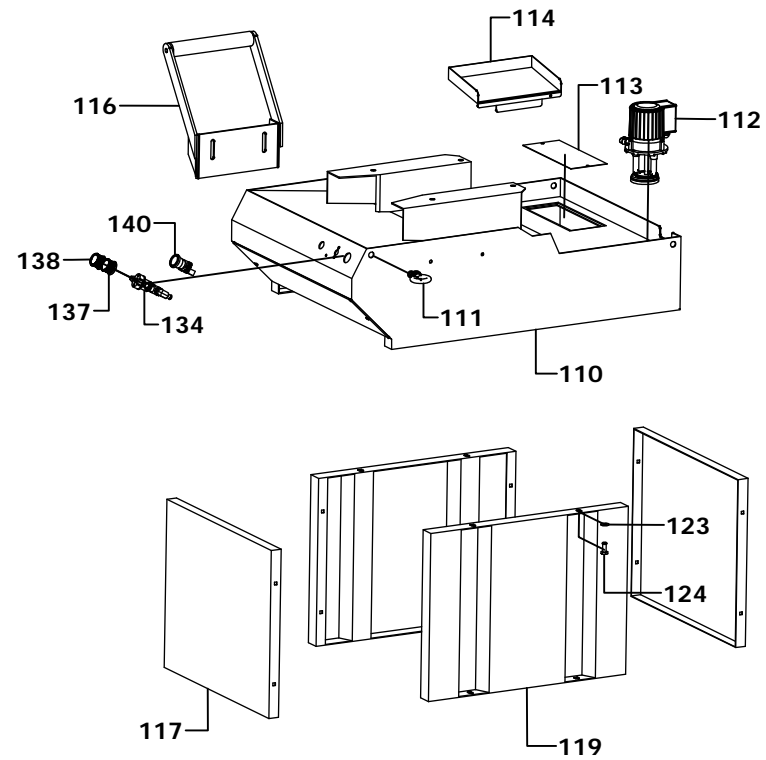
CY-350R

EXPLODED-B



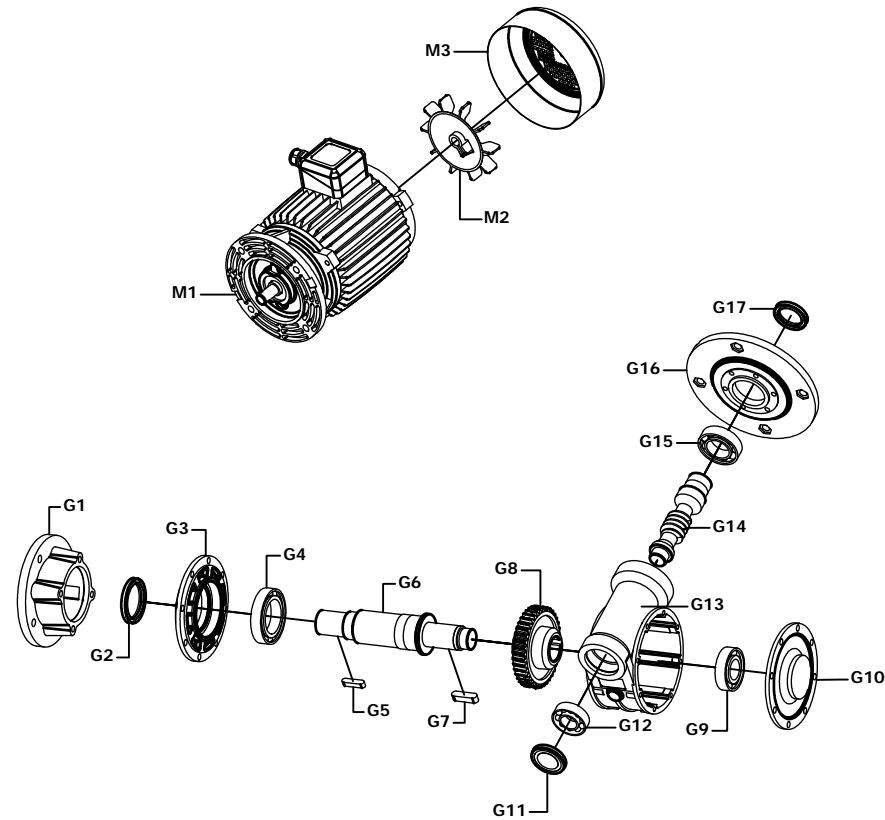
CY-350R

EXPLODED-C



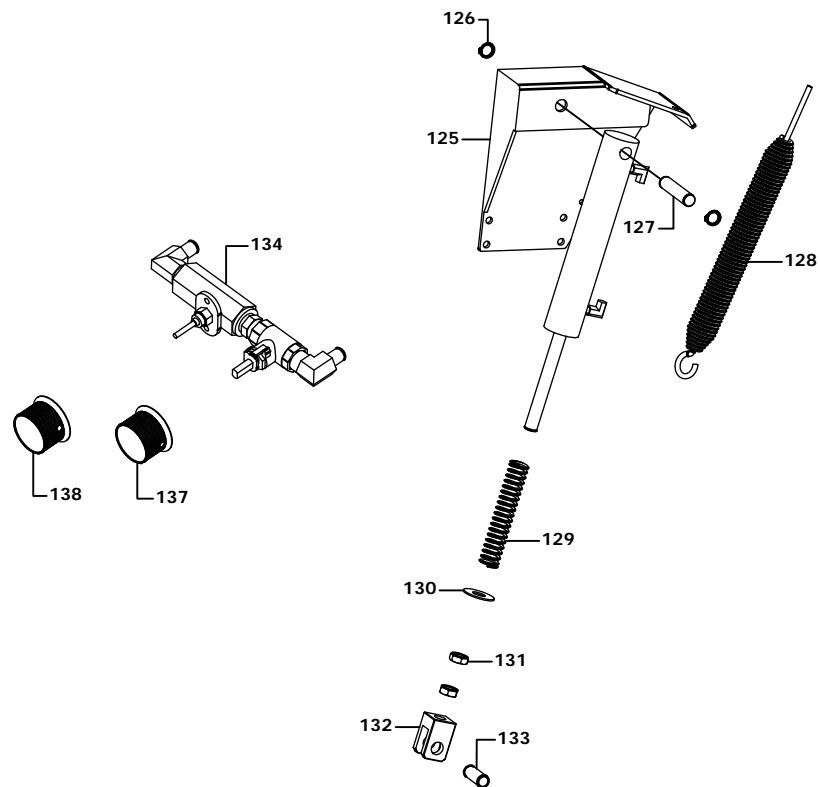
CY-350R

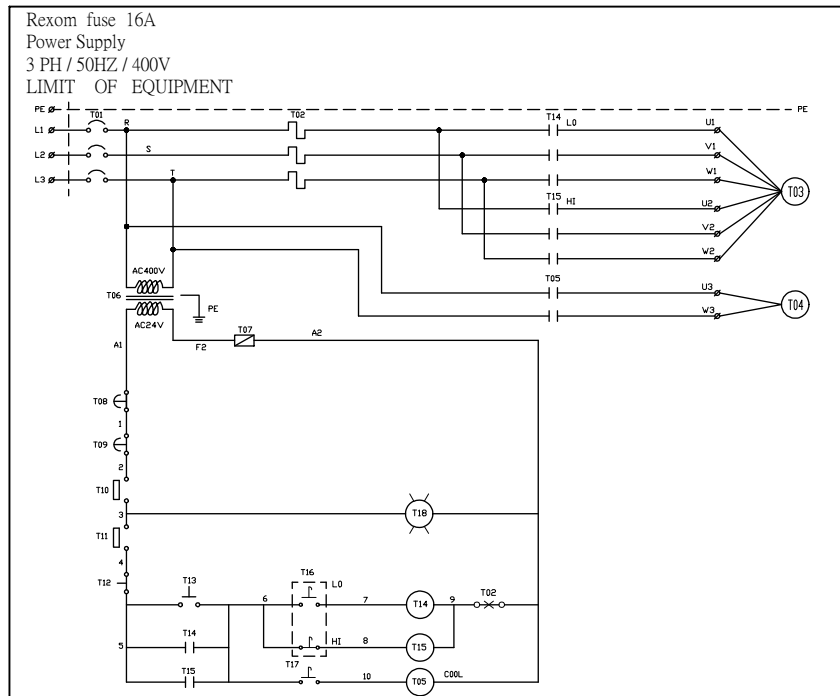
EXPLODED-D



CY-350R

EXPLODED-E





Electrical parts list

Part No	Name	Dscription	Producer	Mark
T01	POWER	CAM SWITCH	SAIZER	CE
T02	OL	OL	SHIHLIN	CE
T03	M1	SAW MOTOR	GOROGE	CE
T04	M2	PUMP MOTOR	GOROGE	CE
T05	R1	RELAY 12A	RY	CE
T06	PT	TRANSFORMER	GOROGE	CE
T07	F1	FUSE	DEMEX	CE
T08	EMS1	EMERGENCY STOP	CIRO	CE
T09	EMS2	EMERGENCY STOP	CIRO	CE
T10	SAFE MICRO	MICRO SWITCH	HAILY	CE
T11	DOWN MICRO	MICRO SWITCH	CIAO TEN	CE
T12	OFF	O SWITCH	TEND	CE
T13	ON	I SWITCH	TEND	CE
T14	MS1	MS	SHIHLIN	CE
T15	MS2	MS	SHIHLIN	CE
T16	SPEED	SPEED SWITCH	TEND	CE
T17	COOL	PUMP SWITCH	TEND	CE
T18	LAMP	POWER LAMP	TEND	CE