



Spareparts



BANDZAAGMACHINE BS 160
SCIE A RUBAN BS 160

CE

Bestelnr./N° de cde. 50085

PROFILE

features

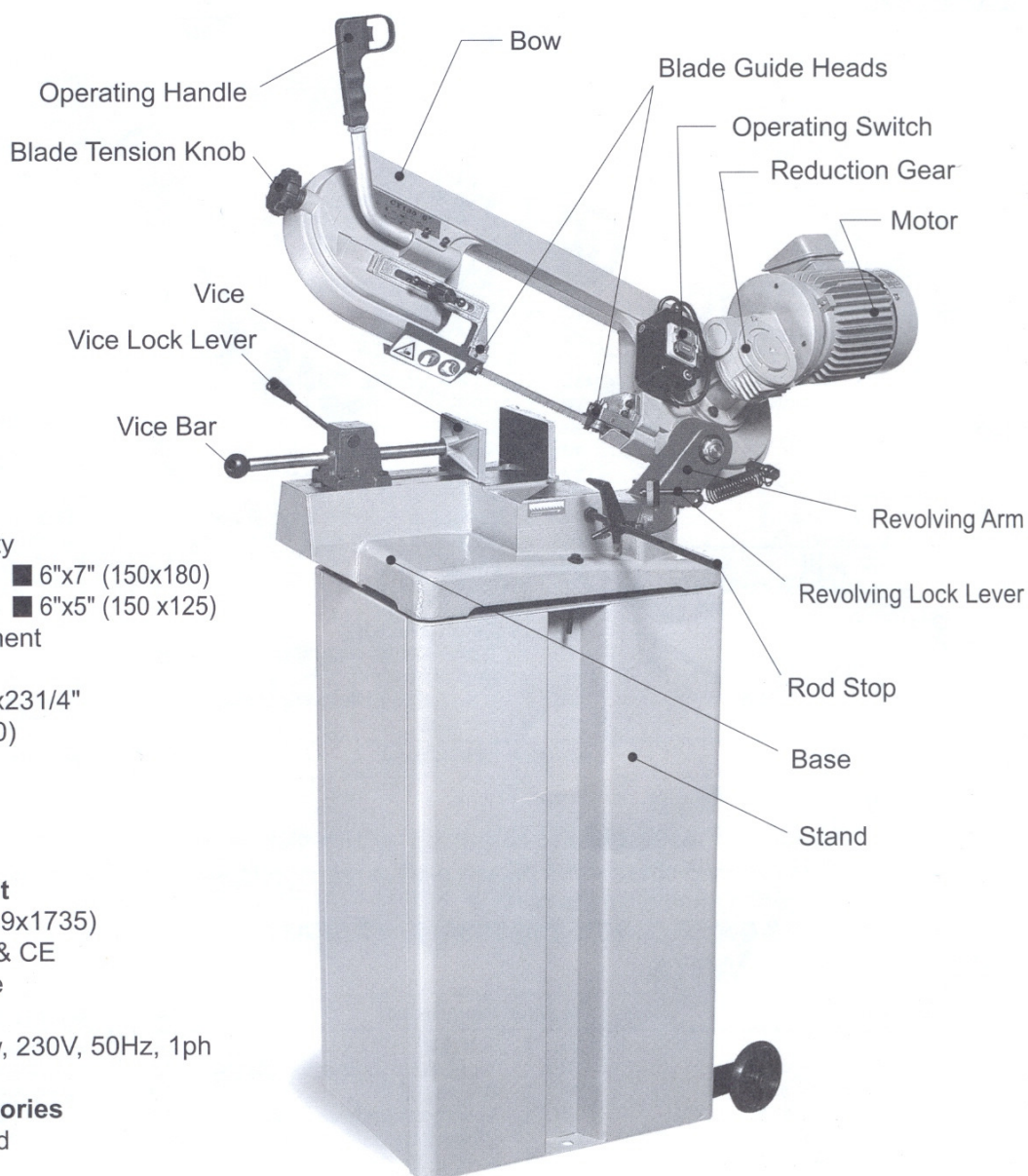
- Miter scale
0 ~ 45°
- Cutting speed
65 MPM
- Cutting capacity
90° : ●6" (150) ■6"x7" (150x180)
45° : ●5" (125) ■6"x5" (150 x125)
- Box measurement
8 cu.ft.
431/4"x151/2"x231/4"
(1100x390x590)
- Weight
N.W. : 52 kgs
G.W. : 56 kgs

basic equipment

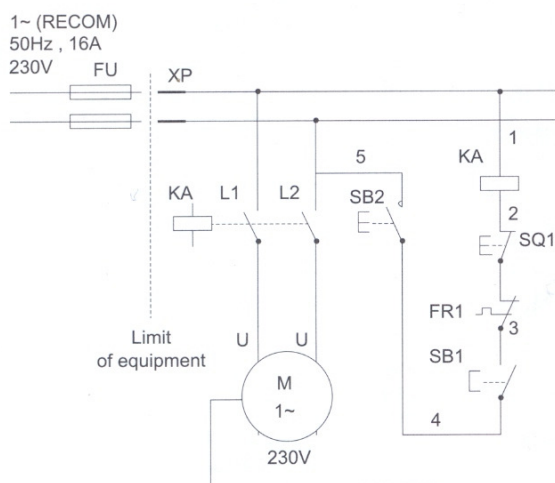
- Blade (12.7x0.9x1735)
- N.V.R. switch & CE
- Quick grip vise
- Motor
1/2 hp, 0.37kw, 230V, 50Hz, 1ph

optional accessories

- Machine stand



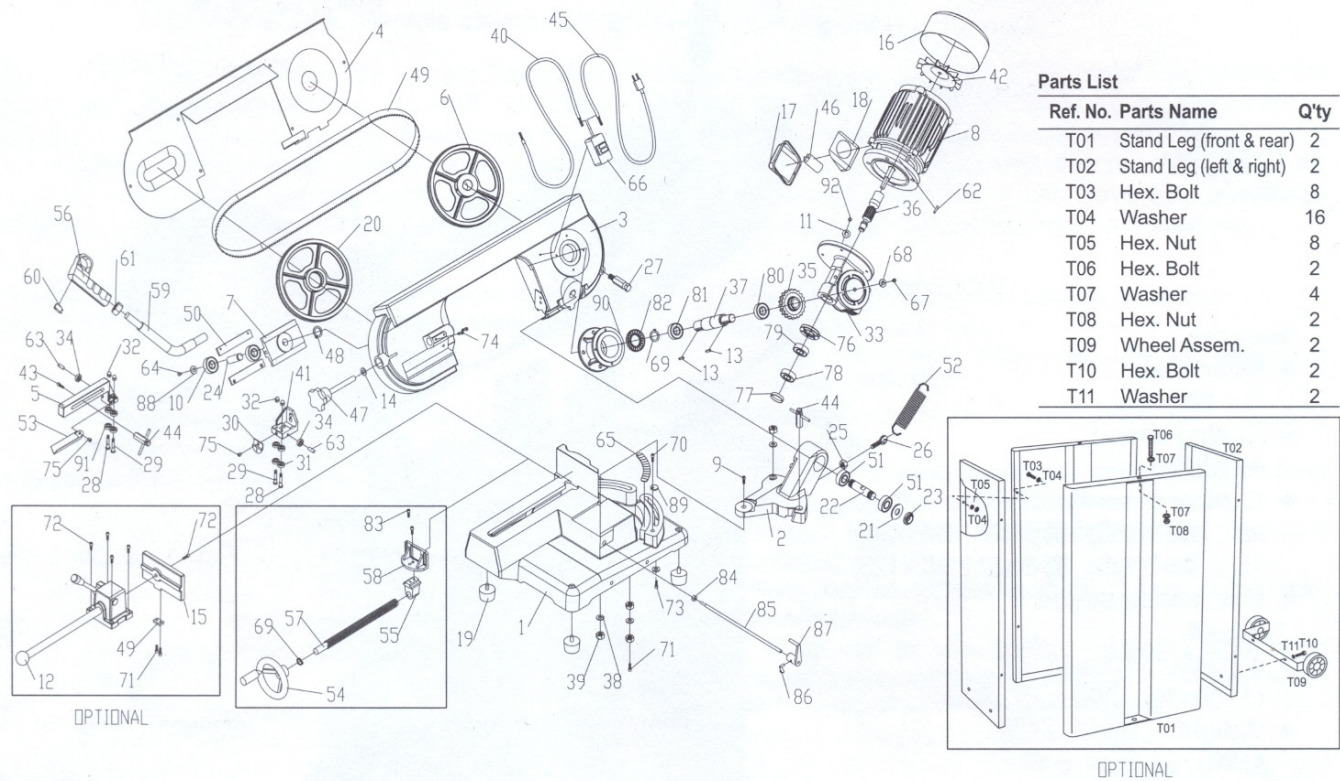
CIRCUIT DIAGRAM



ELECTRICAL PART LIST

Item	Description	Description and function	Technical data	
1	KA	Contactor-relay KEDU KTD12	Coil : 230Vac Contact : 10A	CE
2	SB1	Push button OFF; 1 <>red	IP54 : 250 Vac	CE
3	SB2	ON; 1 <<A>>green	IP54 : 250 Vac	CE
4		Supply Cable	AC 600V , 10A, 3G / 0.75 mm for 375W motor	CE
5	M	Motor	376W / 230V, IP 54	CE
6	SQ1	Micro Switch	20.5A 125 / 250 Vac	CE
7	FR1	Over Load	7A 125 / 250 Vac	CE

EXPLODED VIEW



DELIVERING OF SPARE PARTS

Please note: When ordering spare parts please always mention: Model of the machine, Serial number and Reference number of the part
SHOULD REF. NUMBERS MISSING, NO SPARE PART WILL BE DELIVERED.

LIST OF SPARE PARTS

No.	Q'ty	Description	No.	Q'ty	Description	No.	Q'ty	Description
1	1	Base 本座	32	4	Nut 螺帽	63	1	Pin 插銷
2	1	Miter plate 旋轉盤	33	1	Transmission gear set 渦輪組	64	1	Screw 螺絲
3	1	Body frame 鋸弓	34	2	Bearing 培林	65	1	Scale 角度尺
4	1	Body cover 弓蓋	35	1	Transmission gear 渦輪	66	1	Switch 開關
5	1	Arm 長支架	36	1	Worm gear 渦桿	67	1	Screw 螺絲
6	1	Motor flywheel 下鋸輪	37	1	Axis 主軸	68	1	Washer 墊圈
7	1	Block blade tension 滑塊	38	2	Washer 華司	69	1	C-ring 扣環
8	1	Motor 馬達	39	2	Nut 螺帽	70	2	Screw 螺絲
9	1	Pin 旋轉軸	40	1	Electrical cable 電線	71	2	Screw 螺絲
10	2	Bearing 培林	41	1	Fixed blade guide plate 培林座	72	4	Screw 螺絲
11	1	Gasket 墊片	42	1	Motor fan 馬達風扇	73	1	Screw 螺絲
12	1	Quick grip vise 快速夾具	43	1	Screw 螺絲	74	2	Screw 螺絲
13	1	key 鍵	44	1	Bolt 栓頭	75	1	Screw 螺絲
14	1	Washer 華司	45	1	Electrical cable 電源線	76	1	Oil seal 25x37x7# 油封
15	1	Vice jaw 45前檔板	46	1	Condenser 電容器	77	1	Oil seal 35x7# 油封
16	1	Motor rear cover 後馬達蓋	47	1	Handwheel 鋸片調整柱	78	1	Bearing 6202# 培林
17	1	Cable cover, up 出口線蓋上	48	1	C-ring "C"型扣	79	1	Bearing 6805# 培林
18	1	Cable cover, down 出口線蓋下	49	1	Saw blade 鋸片	80	1	Bearing 6006# 培林
19	4	Pad 腳墊	50	1	Block 固定板	81	1	Bearing 6006# 培林
20	1	Return flywheel 上鋸輪	51	1	32004 bearing 培林	82	1	Oil seal 30x55x8油封
21	1	washer 華司	52	1	Spring 彈簧	83	1	Screw 螺絲
22	1	Axis 主軸	53	1	L. blade guard 保護片	84	1	Nut M10 螺帽
23	1	Nut 螺帽	54	1	Vice handwheel 手輪	85	1	Rod stock stop 長度桿
24	1	Blade sheet shaft 上鋸輪軸	55	1	Vice seat 角牙座	86	1	Butterfly screw 蝶螺絲
25	1	Nut 螺帽	56	1	Handle 手柄	87	1	Stock 長度板
26	1	Spring connection 拉鉤	57	1	Vice screw 角牙桿	88	1	Gasket 墊片
27	1	Spring axis 彈簧軸	58	1	Clamping plate vice 小虎鉗	89	1	Eccentric washer 偏心華司
28	2	Bias axis 偏心軸	59	1	Handle shelf 手柄架	90	1	Gear base 齒輪箱座
29	2	Bias axis 偏心軸	60	1	Micro switch 微動開關	91	1	Bearing 607# 培林
30	1	Rust plate 前檔片	61	1	Nut 螺帽	92	1	Screw 螺絲
31	8	Bearing 607#培林	62	1	4mm key 鍵			